

MiHow2[®]



More than 250 instructional videos.

**MOTION[®]
INDUSTRIES**
Keeping Industry in Motion

Call. 800-526-9328
Click. MotionIndustries.com
Visit. Over 550 Locations



tinyurl.com/MiHow2videos

SUBSCRIBE AT [YOUTUBE.COM/MIHOW2](https://youtube.com/mihow2) FOR AUTOMATIC NOTIFICATIONS AND UPDATES.



Cam Follower Standard

- Basic style suits a wide range of applications
- Sealed type with crowned outer ring
- Easy lubrication with oil supplied from the stud head with a hexagon socket design
- Manufacturer: IKO



WARNING: Cancer and Reproductive Harm
www.P65Warnings.ca.gov

Mi Item #	Mfr Part #	OD	Stud Dia	Thread Pitch
06894521	CF3BUUR	10 mm	3 mm	M3 x 0.5
05492854	CF4BUUR	12 mm	4 mm	M4 x 0.7
06618801	CF5BUUR	13 mm	5 mm	M5 x 0.8
00148635	CF6BUUR	16 mm	6 mm	M6 x 1
00124376	CF8UUR	19 mm	8 mm	M8 x 1.25
00130102	CF10BUUR	22 mm	10 mm	M10 x 1.25
03541272	CF10BUURM	22 mm	10 mm	M10 x 1
00103928	CF10-1BUUR	26 mm	10 mm	M10 x 1.25
06248921	CF10-1BUURM	26 mm	10 mm	M10 x 1
00121937	CF12BUUR	30 mm	12 mm	M12 x 1.5
00121924	CF12-1BUUR	32 mm	12 mm	M12 x 1.5
01629378	CF16BUUR	35 mm	16 mm	M16 x 1.5
06197609	CF18BUUR	40 mm	18 mm	M18 x 1.5
00448848	CF20BUUR	52 mm	20 mm	M20 x 1.5
02910642	CF20-1BUUR	47 mm	20 mm	M20 x 1.5
05076840	CF24BUUR	62 mm	24 mm	M24 x 1.5
06222068	CF24-1BUUR	72 mm	24 mm	M24 x 1.5
02417592	CF30BUUR	80 mm	30 mm	M30 x 1.5
06187799	CF30-1BUUR	85 mm	30 mm	M30 x 1.5
06894527	CF30-2BUUR	90 mm	30 mm	M30 x 1.5

Cam Follower

Thrust Disk—Maintenance-Free
C-Lube

- Special resin thrust disk washers are superior in wear and heat resistance between the sliding contact area of outer ring shoulders, stud head and side plate
- Reduces friction and wear due to axial loads caused by misalignment, etc.
- Sealed type with crowned outer ring
- Hexagonal hole on roller side
- Bearings are lubricated with a newly developed thermosetting solid-type lubricant which fills the inner space of the bearing
- Lubricant provides long-term, maintenance-free service
- Manufacturer: IKO



WARNING: Cancer and Reproductive Harm
www.P65Warnings.ca.gov

Mi Item #	Mfr Part #	OD	Stud Dia	Thread Pitch
07130311	CF5WBUUR/SG	13 mm	5 mm	M5 x 0.8
06895133	CF6WBUUR/SG	16 mm	6 mm	M6 x 1
06895134	CF8WBUUR/SG	19 mm	8 mm	M8 x 1.25
05574148	CF10WBUUR/SG	22 mm	10 mm	M10 x 1.25
06895135	CF10-1WBUUR/SG	26 mm	10 mm	M10 x 1.25
06895136	CF12WBUUR/SG	30 mm	12 mm	M12 x 1.5
06895137	CF12-1WBUUR/SG	32 mm	12 mm	M12 x 1.5
06895138	CF16WBUUR/SG	35 mm	16 mm	M16 x 1.5
06895139	CF18WBUUR/SG	40 mm	18 mm	M18 x 1.5
06895140	CF20WBUUR/SG	52 mm	20 mm	M20 x 1.5
06895141	CF20-1WBUUR/SG	47 mm	20 mm	M20 x 1.5



IKO CAM FOLLOWERS SUPERIOR PERFORMANCE UNDER PRESSURE

IKO Thrust Disk Cam Followers have a proprietary internal thrust disk that reduces friction caused by misalignment. This results in superior wear characteristics and heat resistance, which can prevent premature failures.



Cam Follower

Double Hex Hole

- Heavy-duty design features large load ratings and a black oxide film treatment
- Sealed type with crowned outer ring
- Manufacturer: IKO



WARNING: Cancer and Reproductive Harm
www.P65Warnings.ca.gov

Mi Item #	Mfr Part #	OD	Stud Dia	Thread Pitch	Outer Ring
Cage Type Roller Guide Method					
08775750	CFKR22UU	22 mm	10 mm	M10 x 1.0	Crowned
08775751	CFKR22UUR	22 mm	10 mm	M10 x 1.0	Cylindrical
08215777	CFKR26UU	26 mm	10 mm	M10 x 1.0	Crowned
08775752	CFKR26UUR	26 mm	10 mm	M10 x 1.0	Cylindrical
08084059	CFKR30UU	30 mm	12 mm	M12 x 1.5	Crowned
08775753	CFKR30UUR	30 mm	12 mm	M12 x 1.5	Cylindrical
08775754	CFKR32UU	32 mm	12 mm	M12 x 1.5	Crowned
08775755	CFKR32UUR	32 mm	12 mm	M12 x 1.5	Cylindrical
08775756	CFKR35UU	35 mm	16 mm	M16 x 1.5	Crowned
08775757	CFKR35UUR	35 mm	16 mm	M16 x 1.5	Cylindrical
08775758	CFKR40UU	40 mm	18 mm	M18 x 1.5	Crowned
08208257	CFKR40UUR	40 mm	18 mm	M18 x 1.5	Cylindrical
08775759	CFKR47UU	47 mm	20 mm	M20 x 1.5	Crowned
08069037	CFKR47UUR	47 mm	20 mm	M20 x 1.5	Cylindrical
08202152	CFKR52UU	52 mm	20 mm	M20 x 1.5	Crowned
08775760	CFKR52UUR	52 mm	20 mm	M20 x 1.5	Cylindrical
08775761	CFKR62UU	62 mm	24 mm	M24 x 1.5	Crowned
08775762	CFKR62UUR	62 mm	24 mm	M24 x 1.5	Cylindrical
08775763	CFKR72UU	72 mm	24 mm	M24 x 1.5	Crowned
08775764	CFKR72UUR	72 mm	24 mm	M24 x 1.5	Cylindrical
08775765	CFKR80UU	80 mm	30 mm	M30 x 1.5	Crowned
08775766	CFKR80UUR	80 mm	30 mm	M30 x 1.5	Cylindrical
08775767	CFKR85UU	85 mm	30 mm	M30 x 1.5	Crowned
08775768	CFKR85UUR	85 mm	30 mm	M30 x 1.5	Cylindrical
08775769	CFKR90UU	90 mm	30 mm	M30 x 1.5	Crowned
08775770	CFKR90UUR	90 mm	30 mm	M30 x 1.5	Cylindrical
Full Complement Type Roller Guide Method					
08775771	CFKR22VUU	22 mm	10 mm	M10 x 1.0	Crowned
08775772	CFKR22VUUR	22 mm	10 mm	M10 x 1.0	Cylindrical
08775773	CFKR26VUU	26 mm	10 mm	M10 x 1.0	Crowned
08775774	CFKR26VUUR	26 mm	10 mm	M10 x 1.0	Cylindrical
08775775	CFKR30VUU	30 mm	12 mm	M12 x 1.5	Crowned
08775776	CFKR30VUUR	30 mm	12 mm	M12 x 1.5	Cylindrical
08775777	CFKR32VUU	32 mm	12 mm	M12 x 1.5	Crowned
08775778	CFKR32VUUR	32 mm	12 mm	M12 x 1.5	Cylindrical
08775779	CFKR35VUU	35 mm	16 mm	M16 x 1.5	Crowned
08775780	CFKR35VUUR	35 mm	16 mm	M16 x 1.5	Cylindrical
07746756	CFKR40VUU	40 mm	18 mm	M18 x 1.5	Crowned
08087531	CFKR40VUUR	40 mm	18 mm	M18 x 1.5	Cylindrical
08775781	CFKR47VUU	47 mm	20 mm	M20 x 1.5	Crowned
08775782	CFKR47VUUR	47 mm	20 mm	M20 x 1.5	Cylindrical

Some products may ship direct from the manufacturer.

Mi Item #	Mfr Part #	OD	Stud Dia	Thread Pitch	Outer Ring
08775783	CFKR52VUU	52 mm	20 mm	M20 x 1.5	Crowned
08775784	CFKR52VUUR	52 mm	20 mm	M20 x 1.5	Cylindrical
08775785	CFKR62VUU	62 mm	24 mm	M24 x 1.5	Crowned
08775786	CFKR62VUUR	62 mm	24 mm	M24 x 1.5	Cylindrical
08775787	CFKR72VUU	72 mm	24 mm	M24 x 1.5	Crowned
08775788	CFKR72VUUR	72 mm	24 mm	M24 x 1.5	Cylindrical
08775789	CFKR80VUU	80 mm	30 mm	M30 x 1.5	Crowned
08775790	CFKR80VUUR	80 mm	30 mm	M30 x 1.5	Cylindrical
08775791	CFKR85VUU	85 mm	30 mm	M30 x 1.5	Crowned
08775792	CFKR85VUUR	85 mm	30 mm	M30 x 1.5	Cylindrical
08775793	CFKR90VUU	90 mm	30 mm	M30 x 1.5	Crowned
08775794	CFKR90VUUR	90 mm	30 mm	M30 x 1.5	Cylindrical

Cam Follower

Heavy-Duty with Hexagon Socket

Inch Series

- Heavy-duty design features large load ratings and a black oxide film treatment
- Sealed type with crowned outer ring
- Manufacturer: IKO



WARNING: Cancer and Reproductive Harm
www.P65Warnings.ca.gov

Mi Item #	Mfr Part #	OD	Stud Dia	Thread Pitch
Full Complement Type Roller Guide Method				
07060387	CRH8-1VBUUR	1/2"	1/4"	1/4-28
07060391	CRH9VBUUR	9/16"	1/4"	1/4-28
07060317	CRH10-1VBUUR	5/8"	5/16"	5/16-24
07060322	CRH11VBUUR	11/16"	5/16"	5/16-24
07060326	CRH12VBUUR	3/4"	7/16"	7/16-20
07060329	CRH14VBUUR	7/8"	7/16"	7/16-20
07060332	CRH16VBUUR	1"	5/8"	5/8-18
07060335	CRH18VBUUR	1-1/8"	5/8"	5/8-18
07060338	CRH20VBUUR	1-1/4"	3/4"	3/4-16
07060341	CRH22VBUUR	1-3/8"	3/4"	3/4-16
07060344	CRH24VBUUR	1-1/2"	7/8"	7/8-14
07060348	CRH26VBUUR	1-5/8"	7/8"	7/8-14
07060352	CRH28VBUUR	1-3/4"	1"	1-14 UNS
07060354	CRH30VBUUR	1-7/8"	1"	1-14 UNS
06713669	CRH32VBUUR	2"	1-1/8"	1-1/8-12
07060360	CRH36VBUUR	2-1/4"	1-1/8"	1-1/8-12
07060364	CRH40VBUUR	2-1/2"	1-1/4"	1-1/4-12
07060368	CRH44VBUUR	2-3/4"	1-1/4"	1-1/4-12
07060371	CRH48VBUUR	3"	1-1/2"	1-1/2-12
07060375	CRH52VBUUR	3-1/4"	1-1/2"	1-1/2-12
07060379	CRH56VBUUR	3-1/2"	1-3/4"	1-3/4-12 UN
07060383	CRH64VBUUR	4"	2"	2-12 UN



Barksdale

CONTROL PRODUCTS

Sealed Piston Switch

Visual Indicating

Series C9612

- Extremely long life
- Weather-resistant housing
- Easy set point adjustment
- High reliability
- High proof pressure
- Applications: Compactors and balers, machine tools, lubrication equipment, hydraulic presses, railroad, hydraulic power units, compressors, utility and power generation, metal working application
- Manufacturer: Barksdale



WARNING: Cancer and Reproductive Harm
www.P65Warnings.ca.gov

Mi Item #	Mfr Part #	Model	Max Pressure Setting	O-Ring
03218171	C9612-3	Single Setpoint	3,000	BUNA-N
00842260	C9612-2	Single Setpoint	1,500	BUNA-N

Pressure Switch

MSPS Series

- Compact size
- Stripped housing
- Easy setpoint adjustment
- High reliability
- NEMA 1
- Applications: Pool and spa heaters, beverage dispensers, medical gas delivery systems, general industrial applications
- Manufacturer: Barksdale



WARNING: Cancer and Reproductive Harm
www.P65Warnings.ca.gov

Mi Item #	Mfr Part #	Pressure Range (PSI)	Limit Switch	Pressure Connection
07564047	MSPS-JJ100SS	100	SPDT; 15 amps at 125/150 VAC; 0.5 amps at 125 VDC; 0.25 amps at 250 VDC	Stainless Steel, 1/8" NPT Male

Pressure Switch

Compact

Series CSM

- Multiple electrical connections
- SPDT or SPST
- Field adjustable
- Current rating: 5A @ 125V AC
- Diaphragm material: Buna-N
- Pressure range: 1,000 psi to 3,000 psi
- Applications: Hydraulic power units, general industrial applications, lubrication systems
- Manufacturer: Barksdale



WARNING: Cancer and Reproductive Harm
www.P65Warnings.ca.gov

Mi Item #	Mfr Part #	Limit Switch	Process Fitting Size	Electrical Connection
07563733	CSM17-11-34B	SPST, N.O.	7/16" -20 SAE	Leads w/ Deutsch 2 Pins DT04-2P

Barksdale®
CONTROL PRODUCTS

Measure | Monitor | Control:

- ▶ Pressure
- ▶ Temperature
- ▶ Level

Innovation. Reliability. Performance. Quality.

For Your Hydraulic Power Units

<https://tinyurl.com/uyluhn4>

Some products may ship direct from the manufacturer.



Barksdale

CONTROL PRODUCTS

Industrial Transducer General (Amplified)

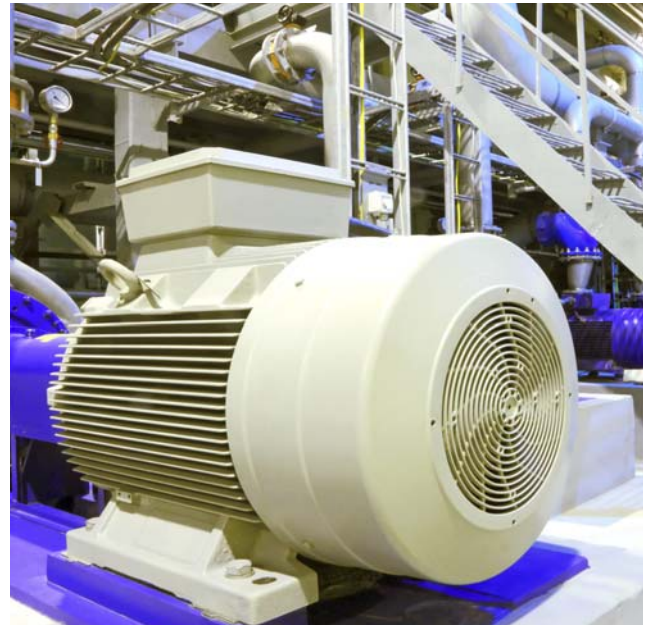
- General-purpose, industrial-grade transducer
- Diffused silicon sensor for high accuracy and reliability
- Rugged stainless steel enclosure
- Superior surge voltage protection and EMI/RFI immunity
- Built-in high pressure snubber (2,000 psi and above)
- Current and voltage signals
- Applications: Industrial hydraulic equipment, cranes, compressors, gas metering, vacuum machinery packaging
- Manufacturer: Barksdale



WARNING: Cancer and Reproductive Harm
www.P65Warnings.ca.gov

Mi Item #	Mfr Part #	Output	Electrical Connection	Pressure Range (PSI)	Pressure Type
07563420	425H3-13	4 to 20 mA Analog	Shielded & Jacketed #22 AWB Cable 1 meter	0 to 3,000	Gauge Pressure
UL & cUL Approved					
07563405	423T4-21-A-U	0.5 to 5.5 VDC Analog	M12 Hirschman Connector (ELST 4012 PG7)	0 to 30	Absolute Pressure Range

STAY UP TO SPEED.



Are you dedicated to being
on the forefront of motors
for your employees?
Motion Industries has created a
one-stop information hub to help
you make informed decisions.

(THE MOTOR) SPECIALIST
powered by MOTION INDUSTRIES.

Visit us online at
TheMotorSpecialist.com



Call: 800-526-9328
Click: MotionIndustries.com
Visit: Over 550 Locations



Some products may ship direct from the manufacturer.

Call. 800-526-9328 Click. MotionIndustries.com Visit. Over 550 Locations



FLUKE

Vibration Meter

- Innovative sensor design minimizes measurement variations caused by device angle or contact pressure
- Consistent data quality at both low and high frequency ranges
- Four-level severity scale assesses urgency of problems for overall vibration and bearing condition
- Exportable data via USB
- Trending in Microsoft® Excel using built-in templates
- Overall vibration measurement (10 Hz to 1,000 Hz) for acceleration, velocity and displacement units of for a wide variety of machines
- Crest Factor+ technology provides reliable bearing assessment using direct sensor tip measurements between 4,000 Hz and 20,000 Hz measurement
- Colored lighting system (green, red) and on-screen comments indicate how much pressure needs to be applied to take measurements
- Temperature measurement with Spot IR Sensor increases diagnostic capabilities
- On-board memory holds and saves up to 3,500 measurements
- Audio output for listening to bearing tones directly
- External accelerometer support for hard-to-reach locations
- Flashlight for viewing measurement locations in dark areas
- Large screen with high resolution for easy navigation and viewing
- Manufacturer: Fluke



WARNING: Cancer and Reproductive Harm
www.P65Warnings.ca.gov

Mi Item #	Mfr Part #	Size (L x W x H)
06461717	FLUKE-805 FC	24.1 cm x 7.1 cm x 5.8 cm

Vibration Tester

- On-board identification and location of the most common mechanical faults (bearings, misalignment, unbalance, looseness) focus maintenance efforts on root cause, reducing unplanned downtime
- Fault severity scale with four severity levels help you prioritize maintenance work
- Repair recommendations advise technicians on corrective action
- On-board context sensitive help provide real-time tips and guidance to new users
- 2 GB expandable on-board memory provides enough space for your machinery's data
- Self-test function ensures optimal performance and more time on the job
- Laser tachometer for accurate machine running speed promotes confident diagnoses
- Tri-axial accelerometer reduces measurement time by 2/3 over single axis accelerometers
- Viewer PC Software expands data storage and tracking capacity
- Manufacturer: Fluke



WARNING: Cancer and Reproductive Harm
www.P65Warnings.ca.gov

Mi Item #	Mfr Part #	Size (D x W)
05043990	FLUKE-810	2.86 cm x 12.19 cm

Laser Shaft Alignment Tool

- Single laser measurement technology means reduced errors from backlash resulting in better data accuracy
- Intuitive guided user interface quickly and easily complete machine alignments
- Compass measurement mode enables flexible, reliable and repeatable measurements using an activated electronic inclinometer
- Dynamic machine tolerance check provides continuous evaluation of alignment adjustments so you know when your machine in acceptable range
- Unique extend mode handles gross misalignment by virtually increasing laser detector size
- Data protection ensures your data is there when you need it with auto save and resume capability
- Manufacturer: Fluke



WARNING: Cancer and Reproductive Harm
www.P65Warnings.ca.gov

Mi Item #	Mfr Part #	Size
06461311	FLUKE-830	220 mm x 165 mm x 45 mm

**FLUKE**

Stroboscope

Digital—LED

- High intensity 7-LED array—4,800 lux at 6,000 fpm/30 cm
- High efficiency LED solid-state light source with uniform flash characteristics allow for higher flash rates of 30 fpm to 300,000 fpm
- Digital pulse width modulation for exceptionally sharp images at high speeds
- Rugged, durable design utilizes solid-state LEDs with no filaments, gases, hollow cavities, or glass (one meter drop)
- Quartz-accuracy control system provides high accuracy of 0.02% (± 1 digit)
- Multi-line LCD display
- Check the rotating speed of machinery without physical contact or need for reflective tape
- Advance or retard flash timing for viewing gear teeth, cutting surfaces, repeats, or “drifting” equipment
- Simple pushbutton operation with 2x and +2 buttons for easy adjustment
- Includes: Protective case and external trigger connector
- Manufacturer: Fluke



WARNING: Cancer and Reproductive Harm
www.P65Warnings.ca.gov

Mi Item #	Mfr Part #	Range (FPM)	Size (H x W x L)
06252282	FLUKE 820-2	30 to 300,000 FPM	2.25" x 2.4" x 7.5"

Vibration Sensor Gateway

- Aggregates data via Bluetooth of up to 20 Fluke 3561 FC Vibration Sensors
- Streams the sensor data to the FCCM software via a Wi-Fi connection
- Remote monitoring: View continuous stream of real-time and historical vibration data from remote assets
- Bluetooth type: Low Energy 4.1
- IP Rating: IP 67
- Wi-Fi connection and AC power required
- Manufacturer: Fluke



WARNING: Cancer and Reproductive Harm
www.P65Warnings.ca.gov

Mi Item #	Mfr Part #	Size (H x W x L)
07862061	FLUKE 3502FC	2.26" x 1.55" x 1.82"

Vibration Sensor

- Wireless, compact sensors for a scalable remote monitoring solution
- Alarms based on user-defined or Fluke Overall Vibration Severity (FOVS) scale thresholds
- Capture rate: One data point every 90 seconds
- Visualize data with software trending and graphing
- Remotely view real-time and historical triaxial vibration, surface temperature data
- Choose from 1- or 3-year software licenses (where applicable)
- Battery life: 3 years (varies by usage)
- Sensor size (H x W): 2.42" x 0.95"
- Bluetooth type: Low energy 4.1
- IP Rating: IP 67
- Includes: Four sensors and subscription to Fluke Connect App, available via free download
- Manufacturer: Fluke



WARNING: Cancer and Reproductive Harm
www.P65Warnings.ca.gov

Mi Item #	Mfr Part #	Frequency Response Range	Subscription Length
07862059	FLK-3561 FC KIT	10 to 1,000 Hz	1 Year
07862062	FLK-3561 FC 3YR	10 to 1,000 Hz	3 Years

Vibration Sensor with Gateway

- Wireless, compact sensors for a scalable remote monitoring solution
- Alarms based on user-defined or Fluke Overall Vibration Severity (FOVS) scale thresholds
- Capture rate: One data point every 90 seconds
- Visualize data with software trending and graphing
- Remotely view real-time and historical triaxial vibration, surface temperature data
- Choose from 1- or 3-year software licenses (where applicable)
- Battery life: 3 years (varies by usage)
- Sensor size (H x W): 2.42" x 0.95"
- Gateway size (H x W x L): 2.26" x 1.55" x 1.82"
- Bluetooth type: Low energy 4.1
- IP Rating: IP 67
- Includes: Four sensors plus gateway and one or three year subscription to Fluke Connect App, available via free download
- Manufacturer: Fluke



WARNING: Cancer and Reproductive Harm
www.P65Warnings.ca.gov

Mi Item #	Mfr Part #	Frequency Response Range	Subscription Length
07862060	FLK-3561/3502 FC	10 to 1,000 Hz	1 Year
07862063	FLK-3561/3502 FC 3 YR	10 to 1,000 Hz	3 Years

Some products may ship direct from the manufacturer.

Call. 800-526-9328 Click. MotionIndustries.com Visit. Over 550 Locations



Washdown-Duty AC Motor

Stainless Steel

Extreme Duck® Ultra Washguard™

- IP69 certified enclosure protection
- Full body internal encapsulation, including both endbells, reduces points of entry for contaminants and eliminates needs for drain plugs and breathers
- Two-piece shaft seal technology provides three points of protection on both ends of the motor
- Easily removed Q-Car™ rotor cartridge makes bearing replacement ultra simple
- 360° rotatable, o-ring sealed, round conduit box for convenient wire placement
- Colored, non-wicking, chemical- and abrasion-resistant leads for easy connection and installation
- Inner double-lipped Viton® shaft seal
- Full fact laser etched nameplate
- Exterior components are 300 Series stainless steel
- IP69K tested per DIN 40050-9
- CSA Energy Efficiency Verification Program report number EEV 78720-1
- Construction is CSA certified for safety, report number LR33543 and listed under BISSC authorization number 769
- 3-year warranty
- Items marked with an (*) are premium efficient
- Manufacturer: Leeson



WARNING: Cancer and Reproductive Harm
www.P65Warnings.ca.gov

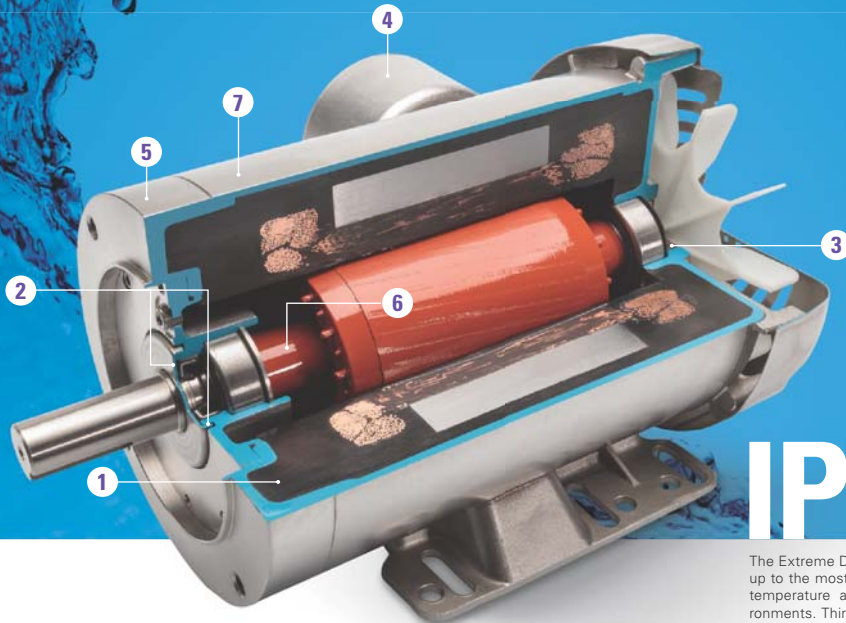
Mi Item #	Mfr Part #	HP	RPM	NEMA Frame	Enclosure
3-Phase C-Face w/ Base					
06189032	117118.00	1/2	3,600	56C	TENV
06243612	103411.00	1/2	1,800	S56C	TENV
04822126	117119.00	1/2	1,800	56C	TENV
06243707	119266.00	1/2	1,200	56C	TENV
06243683	117120.00	3/4	3,600	56C	TEFC
06034867	103412.00	3/4	1,800	S56C	TEFC
04822127	117121.00	3/4	1,800	56C	TENV
06243708	119267.00	3/4	1,200	56C	TENV
04822128	*117122.00	1	3,600	56C	TENV
07578738	119975.00	1	1,800	56C	TENV
07196865	119511.00	1	1,800	56C	TEFC
07398936	*122219.00	1	1,800	143TC	TEFC
07126654	119513.00	1	1,200	56C	TEFC
06189035	*121879.00	1-1/2	3,600	143TC	TEFC

Mi Item #	Mfr Part #	HP	RPM	NEMA Frame	Enclosure
07124702	*119522.00	1-1/2	1,800	56C	TEFC
06189036	*121880.00	1-1/2	1,800	145TC	TEFC
06243731	*121881.00	2	3,600	145TC	TEFC
07124705	*119523.00	2	1,800	56HC	TEFC
07196866	*121882.00	2	1,800	145TC	TEFC
07126643	*119526.00	3	3,600	56C	TEFC
3-Phase C-Face w/o Base					
06243615	103417.00	1/3	1,800	48C	TENV
03807005	117126.00	1/2	3,600	56C	TENV
06243616	103418.00	1/2	1,800	48C	TENV
06243613	103413.00	1/2	1,800	56C	TENV
03811313	117127.00	1/2	1,800	56C	TENV
06243684	117128.00	3/4	3,600	56C	TENV
06243614	103414.00	3/4	1,800	56C	TENV
07669374	119976.00	1	1,750	56C	TENV
03811315	117129.00	3/4	1,800	56C	TENV
06243685	*117130.00	1	3,600	56C	TENV
07123329	*119512.00	1	1,800	56C	TEFC
06243732	*121908.00	1-1/2	3,600	143TC	TEFC
07124703	*119520.00	1-1/2	1,800	56C	TEFC
06243733	*121909.00	1-1/2	1,800	145TC	TEFC
06243734	*121910.00	2	3,600	145TC	TEFC
06189037	*121911.00	2	1,800	145TC	TEFC
07124704	*119524.00	2	1,800	56C	TEFC
07126644	*119525.00	3	3,600	56C	TEFC
SGR 3-Phase Rigid C-Face					
06243699	117906.00	1/2	1,800	56C	TENV
06243700	117907.00	3/4	1,800	56C	TENV
07124724	*119527.00	1	1,800	56C	TEFC
07124725	*119528.00	1-1/2	1,800	56C	TEFC
07398937	*122221.00	1-1/2	1,800	145TC	TEFC
07126525	*119529.00	2	1,800	56C	TEFC
07398938	*122222.00	2	1,800	145TC	TEFC
07126645	*119530.00	3	3,600	56C	TEFC
SGR 3-Phase C-Face w/o Base					
07126646	*119531.00	3	3,600	56C	TEFC



Extreme DUCK ULTRA MOTOR

IT'S WHAT'S INSIDE THAT KEEPS WHAT'S OUTSIDE—OUT.



The Extreme Duck® ULTRA motor stands up to the most demanding high-pressure temperature and dust-penetration environments. Third party UL certification UL file number IEC60529

1 FULLY ENCAPSULATED INTERNAL EPOXY ENCAPSULATION

Full body sealing—including both endbells—reduces air pockets where condensation can occur. Points of entry for contaminants are minimized, and drain plugs and breathers are eliminated.

2 TWO-PIECE SHAFT SEAL TECHNOLOGY

This new design provides three points of protection on both ends of the motor.

3 INNER DOUBLE-LIPPED VITON®* SHAFT SEAL

This oil, water and chemical resistant technology is ideally suited for extreme environments that undergo routine washdown.

4 360° ROTATABLE O-RING SEALED CONDUIT BOX

To simplify installation, full box rotation facilitates wire entry and protects non-wicking, chemical-and abrasion-resistant colored leads.

5 300 SERIES STAINLESS STEEL COMPONENTS

Featured on the frame, base, conduit box cover, end-shields and bearing carrier cover. It's the perfect motor design for extreme washdown conditions.

6 EASILY REMOVED Q-CAR™ ROTOR CARTRIDGE

If bearings need replacement, our exclusive Q-Car™ rotor cartridge disassembles by removing four bolts saving you time and money.

7 FULL-FACT NAMEPLATE

Permanently laser etched into the motor frame, this nameplate will never be separated from the motor.

Creating a better tomorrow™...

*Viton is believed to be the trademark or trade name of the Chemours Company and is not owned or controlled by Regal Beloit Corporation.
Regal, Creating a better tomorrow, Extreme Duck, LEESON and Q-Car are trademarks of Regal Beloit Corporation or one of its affiliated companies.
© 2019 Regal Beloit Corporation, All Rights Reserved. MCAD19066E • L0059E



Some products may ship direct from the manufacturer.

Call. 800-526-9328 Click. MotionIndustries.com Visit. Over 550 Locations

**MOTION®
INDUSTRIES**
Keeping Industry in Motion



Powering Business Worldwide

Flat Face Coupling

ISO 16028 Interchange

FF Series

- Meets or exceeds the ISO 16028 standard
- Push-to-connect
- Standard sleeve lock prevents accidental disconnection
- Color identification rings available to help prevent crossing of lines
- Standard material: High-resistant carbon steel with Guardian Seal™ plating, a whole new level of corrosion resistance with minimum 720 hours RR protection
- Guardian Seal™ plating is nickel-free, solvent-free and meets Global RoHS, ELV and REACH requirements
- Standard seal material: NBR+AU
- Applications and markets: Hydraulic and fluid transfer, construction equipment, agricultural equipment, utility vehicles, on-highway vehicles, stationary in-plant, hydraulics and fluid transfer
- Interchangeable with HTMA couplings in the 3/8" size
- Manufacturer: Eaton



WARNING: Cancer and Reproductive Harm
www.P65Warnings.ca.gov

Mi Item #	Mfr Part #	Body Size	Port Size	Thread	Overall Length
Sockets (Female)					
04118332	10FFS37	3/8"	3/8-18F	NPT	2.67"
06229459	10FFS50	3/8"	1/2-14F	NPT	2.79"
07705607	12FFS50	1/2"	1/2-14F	NPT	3.27"
06229512	12FFS75	1/2"	3/4-14F	NPT	3.39"
Plugs (Male)					
04118331	10FFP37	3/8"	3/8-18F	NPT	2.56"
04981974	10FFP50	3/8"	1/2-14F	NPT	2.68"
06229500	12FFP50	1/2"	1/2-14F	NPT	2.71"
06190138	12FFP75	1/2"	3/4-14F	NPT	2.83"

A Interchange Coupling

ISO 7241-1 A Interchange

5600 Series

- Meets dimensional requirements to ISO standard 7241-1 Series A
- Self-sealing poppet valve provides excellent high and low pressure sealing
- Streamlined valving provides minimum pressure drop
- Standard seal materials: Buna-N, EPDM and FKM
- Standard body material: High resistance carbon steel with zinc trivalent plating (brass poppet guide in -04 size)
- Applications and markets: Hydraulic fluid transfer, agricultural equipment, construction equipment, dump, snow plow and maintenance vehicles, in-plant manufacturing
- Manufacturer: Eaton



WARNING: Cancer and Reproductive Harm
www.P65Warnings.ca.gov

Mi Item #	Mfr Part #	Coupling Type	Body Size	Port Size	Thread	Overall Length
Female NPT, Valved						
Buna-N Seal						
06910890	5602-6-6S	3/8"	3/8"	3/8-18	Plug/Male	1.47"
06910886	5601-6-6S	3/8"	3/8"	3/8-18	Socket/Female	2.15"
00329962	5602-8-10S	5/8"	1/2"	1/2-14	Plug/Male	2.02"
06910887	5601-8-10S	5/8"	1/2"	1/2-14	Socket/Female	2.61"
00299096	5602-12-10S	5/8"	3/4"	3/4-14	Plug/Male	2.16"
00303435	5601-12-10S	5/8"	3/4"	3/4-14	Socket/Female	2.61"
00331591	5602-12-12S	3/4"	3/4"	3/4-14	Plug/Male	2.55"
00329959	5601-12-12S	3/4"	3/4"	3/4-14	Socket/Female	3.25"



Coupling Sets

ISO 7241-1 B Interchange

HK Series

- Self-sealing poppet valve design provides excellent high- and low pressure sealing
- Seal material: Buna-N
- Body material: Zinc trivalent plated steel with stainless steel springs, balls and retaining rings
- PTFE back-up rings in sockets (females)
- Seal options available in PTFE, Neoprene, FKM, EPDM, and Kalrez®
- Applications and markets: Agriculture, hydraulic tool, general industry, construction, fluid transfer, transportation, military, law enforcement/ rescue, chemical, oil and gas, consumer products, HVAC, food and beverage, trucks, aerospace and medical
- Meet dimensional requirements to ISO standard 7241-1 Series B
- Manufacturer: Eaton



WARNING: Cancer and Reproductive Harm
www.P65Warnings.ca.gov

Mi Item #	Mfr Part #	Body Size	Thread Size (female)	Overall Length
Sockets (Female)				
00285484	2H16	1/4"	1/4-18 NPTF	2.26"
00285509	3H21	3/8"	3/8-19 NPTF	2.56"
Plugs (Male)				
00285609	2K16	1/4"	1/4-18 NPTF	1.52"
00285633	3K21	3/8"	3/8-18 NPTF	1.76"

Flat Face Male Coupling Plug

Connect Under Pressure—ISO 16028

FFCUP Series

- Push to connect
- Connect under residual pressure
- Standard material: High-resistant carbon steel with Guardian Seal™ plating, a whole new level of corrosion resistance with minimum 720 hours RR protection
- Guardian Seal™ plating is nickel- and solvent-free and meets Global RoHS, ELV and REACH requirements
- Standard seal material: NBR (Nitrile) and AU (Polyurethane)
- Utilize FF Series dust caps
- Applications and markets: Connection to hydraulic pumps, jacks, distributors and accessories, hydraulic circuits, material handling, construction, agriculture, iron and steel industry, railway and industrial plants
- Shock-resistant color-coding ring option available to prevent accidental crossing of lines
- Designed and manufactured in accordance with Article 3.3 of the European Pressure Equipment Directive PED 2014/68/EU
- Meets dimensional requirements of ISO 16028
- Manufacturer: Eaton



WARNING: Cancer and Reproductive Harm
www.P65Warnings.ca.gov

Mi Item #	Mfr Part #	Body Size	Nominal Flow Dia	Thread Size (female)	Overall Length
06229451	10FFPCUP37	3/8"	8.6 mm	3/8-18	2.89"
06229452	10FFPCUP50	3/8"	8.6 mm	1/2-14	2.89"
08034280	12FFPCUP50	1/2"	11 mm	1/2-14	3.03"

We make productivity work*

Eaton's line of Char-Lynn motors are a premier industry leader in low-speed, high-torque hydraulic motors

EATON
Powering Business Worldwide

Some products may ship direct from the manufacturer.

Call. 800-526-9328 Click. MotionIndustries.com Visit. Over 550 Locations



Filter Kit

Fill-Rite®

- Kit includes F1810PMO filter with 1200KTG9075 (Mi Item #07472936) filter head
- Suitable for all electric pumps
- Compatible with gasoline and diesel
- Manufacturer: Tuthill



WARNING: Cancer and Reproductive Harm
www.P65Warnings.ca.gov

Mi Item #	Mfr Part #
06589215	1200KTF7018

Filter Head

Fill-Rite®

- Suitable for all electric pumps
- Compatible with gasoline and diesel
- Manufacturer: Tuthill



WARNING: Cancer and Reproductive Harm
www.P65Warnings.ca.gov

Mi Item #	Mfr Part #
07472936	1200KTG9075

Rebuild Kit

Fill-Rite®

- Used in all FR1200B and FR2400B pumps
- Used in SD1200 and SD600 pumps with a manufacturer date before 4404
- Always replace the rotor and rotor cover to ensure they are the same hardness
- Manufacturer: Tuthill



WARNING: Cancer and Reproductive Harm
www.P65Warnings.ca.gov

Mi Item #	Mfr Part #
08697116	1200KTG8572

Telescoping Suction Pipe

1"

Fill-Rite®

- Extends 20" to 34-3/4"
- Easily adapts to almost any tank or drum
- Rugged construction withstands season after season of heavy use
- Manufacturer: Tuthill



WARNING: Cancer and Reproductive Harm
www.P65Warnings.ca.gov

Mi Item #	Mfr Part #
08697117	1200KTG9099

Filter

Fill-Rite®

- For F1810HC1 (Mi Item #08697127) clear bowl filter with drain
- Manufacturer: Tuthill



WARNING: Cancer and Reproductive Harm
www.P65Warnings.ca.gov

Mi Item #	Mfr Part #
08411158	1200R0631



Two Wire Power Cable 18'

Fill-Rite®

- Manufacturer: Tuthill



WARNING: Cancer and Reproductive Harm
www.P65Warnings.ca.gov

Mi Item #	Mfr Part #
08697118	1200R9067

Replacement Fuel Filter

Fill-Rite®

- Length: 4-1/2"
- Diameter: 3/4"
- Max pressure: 50 psi
- Applications: Agriculture, construction, mining
- Manufacturer: Tuthill



WARNING: Cancer and Reproductive Harm
www.P65Warnings.ca.gov

Mi Item #	Mfr Part #	Inlet	Outlet
08697119	1200R9146	3/4" NPT	3/4"

Filter Kit

Fill-Rite® Hydrosorb®

- Kit includes F1810HMO filter with 1200KTG9075 (Mi Item #07472936) filter head
- Suitable for all electric pumps
- Compatible with gasoline and diesel
- Manufacturer: Tuthill



WARNING: Cancer and Reproductive Harm
www.P65Warnings.ca.gov

Mi Item #	Mfr Part #
06589216	1210KTF7019

UL Hose

Fill-Rite®

- 1" NPT fittings
- Dispenses diesel fuel, gasoline, kerosene, and petroleum oils
- Static wire
- Manufacturer: Tuthill



WARNING: Cancer and Reproductive Harm
www.P65Warnings.ca.gov

Mi Item #	Mfr Part #	Size (W x L)
08697120	300F7773	1" x 12'

Rebuild Kit

Fill-Rite®

- For FR300 series pumps
- Manufacturer: Tuthill



WARNING: Cancer and Reproductive Harm
www.P65Warnings.ca.gov

Mi Item #	Mfr Part #
07779652	300KTF7794

Some products may ship direct from the manufacturer.

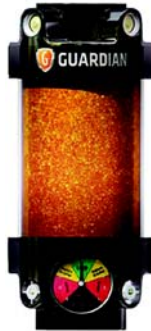
Call. 800-526-9328 Click. MotionIndustries.com Visit. Over 550 Locations



Desiccant Breather

GUARDIAN®

- Silica gel medium
- 2 micron solid particle filtration
- Replacement desiccant cartridges available for each Guardian model
- Includes isolation check valves, which isolate the absorbent from exhaust air to lengthen service life
- Integrated compound vacuum/pressure gauge
- Breather cartridges are modular and can be modified to include a filter or extra desiccant cartridge for greater absorbent capacity
- Manufacturer: Air Sentry



WARNING: Cancer and Reproductive Harm
www.P65Warnings.ca.gov

Mi Item #	Mfr Part #	Size (H x Dia)	Max Adsorption Capacity	Replacement Cartridge
1" NPT Thread				
06159531	G5S1N	9" x 5.125"	9.2 fl oz	GRC5S
07280177	G8S1N	12" x 5.125"	17.2 fl oz	GRC8S
07280181	G12S1N	16" x 5.125"	27.6 fl oz	GRC12S
1" NPT Thread with Isolation Check Valve				
06146889	G5S1NC	9" x 5.125"	9.2 fl oz	GRC5SC
06181768	G8S1NC	12" x 5.125"	17.2 fl oz	GRC8SC
06181770	G12S1NC	16" x 5.125"	27.6 fl oz	GRC12SC
1" NPT Thread with Compound Indicating Gage				
05678077	G5S1NG	9" x 5.125"	9.2 fl oz	GRC5S
07280178	G8S1NG	12" x 5.125"	17.2 fl oz	GRC8S
07280182	G12S1NG	16" x 5.125"	27.6 fl oz	GRC12S
1" NPT Thread with Isolation Valve and Compound Indicating Gage				
06084732	G5S1NGC	9" x 5.125"	9.2 fl oz	GRC5SC
06218052	G8S1NGC	12" x 5.125"	17.2 fl oz	GRC8SC
07280183	G12S1NGC	16" x 5.125"	27.6 fl oz	GRC12SC
2" NPT Thread				
07280174	G5S2N	9" x 5.125"	9.2 fl oz	GRC5S
07280179	G8S2N	12" x 5.125"	17.2 fl oz	GRC8S
07280184	G12S2N	16" x 5.125"	27.6 fl oz	GRC12S
2" NPT Thread with Isolation Check Valve				
06181767	G5S2NC	9" x 5.125"	9.2 fl oz	GRC5SC
06181769	G8S2NC	12" x 5.125"	17.2 fl oz	GRC8SC
06383026	G12S2NC	16" x 5.125"	27.6 fl oz	GRC12SC
2" NPT Thread with Compound Indicating Gage				
07280175	G5S2NG	9" x 5.125"	9.2 fl oz	GRC5S
07280180	G8S2NG	12" x 5.125"	17.2 fl oz	GRC8S
07280185	G12S2NG	16" x 5.125"	27.6 fl oz	GRC12S
2" NPT Thread with Isolation Valve and Compound Indicating Gage				
07280176	G5S2NGC	9" x 5.125"	9.2 fl oz	GRC5SC
06490516	G8S2NGC	12" x 5.125"	17.2 fl oz	GRC8SC
07280186	G12S2NGC	16" x 5.125"	27.6 fl oz	GRC12SC

Desiccant Breather

Disposable Stationary

D-Series

- Silica gel medium
- 2 micron solid particle filtration
- Clear acrylic tube allows for easy inspection of desiccant condition
- Typical applications: Storage tanks, fluid reservoirs, transformers, pumps, gearboxes
- Max air flow: 20 cfm
- Max oil flow: 150 gpm
- Manufacturer: Air Sentry



WARNING: Cancer and Reproductive Harm
www.P65Warnings.ca.gov

Mi Item #	Mfr Part #	Max Flow (CFM)	Max Flow (GPM)	Size (H x Dia)	Mounting Connection	Max Adsorption Capacity
06202924	D-101	20	150	5" x 5"	1" Slip Fit	8.6 fl oz
05762632	D-102	20	150	8" x 5"	1" Slip Fit	16.56 fl oz
05183725	D-103	20	150	8" x 5"	1" MNPT	16.56 fl oz
07280196	D-104	20	150	8" x 5"	2" MNPT	16.56 fl oz
04529881	D-108	20	150	10" x 5"	2" MNPT	21.47 fl oz

EXPECT MORE WITH MOTION

TO DO A JOB RIGHT, YOU DON'T CUT CORNERS.

LEARN HOW OUR INDUSTRIAL SUPPLY OFFERINGS CAN SERVICE YOUR IMMEDIATE NEEDS.

MOTION INDUSTRIES
 Keeping Industry in Motion

Call. 800-526-9328
 Click. MotionIndustries.com
 Visit. Over 550 Locations
 f @ in p v y u
tinyurl.com/MiIndustrialSupply



Replacement Cartridge

Desiccant Breather

GUARDIAN®

- For Guardian desiccant breathers
- Reduce maintenance costs
- Manufacturer: Air Sentry



WARNING: Cancer and Reproductive Harm
www.P65Warnings.ca.gov



Mi Item #	Mfr Part #	Medium Type	Adsorption Capacity	Size (H x Dia)
07280188	GRC5AC	Activated Carbon for Fume and Odor Removal	N/A	5" x 5"
07280191	GRC5M	Molecular Sieve for Low Humidity	4.6 fl oz	5" x 5"
05825380	GRC5S	Silica Gel	9.2 fl oz	5" x 5"
07280193	GRC8S	Silica Gel	17.2 fl oz	8" x 5"
07280194	GRC12S	Silica Gel	27.6 fl oz	12" x 5"
with Isolation Check Valve				
07280190	GRC5ACC	Activated Carbon for Fume and Odor Removal	N/A	5" x 5"
07280192	GRC5MC	Molecular Sieve for Low Humidity	4.6 fl oz	5" x 5"
05516841	GRC5SC	Silica Gel	9.2 fl oz	5" x 5"
06182396	GRC8SC	Silica Gel	17.2 fl oz	8" x 5"
06168466	GRC12SC	Silica Gel	27.6 fl oz	12" x 5"

Air Filter

0.3 Micron—High Capacity

GUARDIAN®

- For use with GMSR
- High particle load holding capacity
- True HEPA filtration
- Ideal for dusty environments
- Helps prevent bacterial contamination of fluids
- Manufacturer: Air Sentry



WARNING: Cancer and Reproductive Harm
www.P65Warnings.ca.gov



Mi Item #	Mfr Part #	Pkg Qty
06181773	GHCAF	1
07280187	GHCAF-CS	6

Washdown Cap

GUARDIAN®

- Extra protective barrier between Guardian unit and excessive dust and moisture for the most extreme conditions
- Designed for environments where frequent washdown of equipment is required or for outdoor and mobile applications where wind and driving rain are factors
- Covering all check valves in the top cap makes it well-suited to prevent any high pressure spray or rain from entering
- Ideal for extremely dusty or dirty environments like mining operations or pulp and paper facilities
- Manufacturer: Air Sentry



WARNING: Cancer and Reproductive Harm
www.P65Warnings.ca.gov

Mi Item #	Mfr Part #
06181771	GSWDC

Modular Stack Ring™

GUARDIAN®

- Allows for the addition of the high-capacity air filter and activated carbon filter
- Customizes your Guardian breather by allowing you to add additional cartridges which may contain silica gel, activated carbon or molecular sieve
- Secondary agents protect equipment from caustic fumes, extend the performance range or increase the life of a desiccant breather
- Manufacturer: Air Sentry



WARNING: Cancer and Reproductive Harm
www.P65Warnings.ca.gov

Mi Item #	Mfr Part #
06181772	GMSR

Some products may ship direct from the manufacturer.

Call. 800-526-9328 Click. MotionIndustries.com Visit. Over 550 Locations



Lift Magnets

Permanent Rare Earth

- ON/OFF, Rare-Earth Permanent Magnet
- Handle locks in both the On & Off positions for safety
- Lifts flat sheets or curved pipe



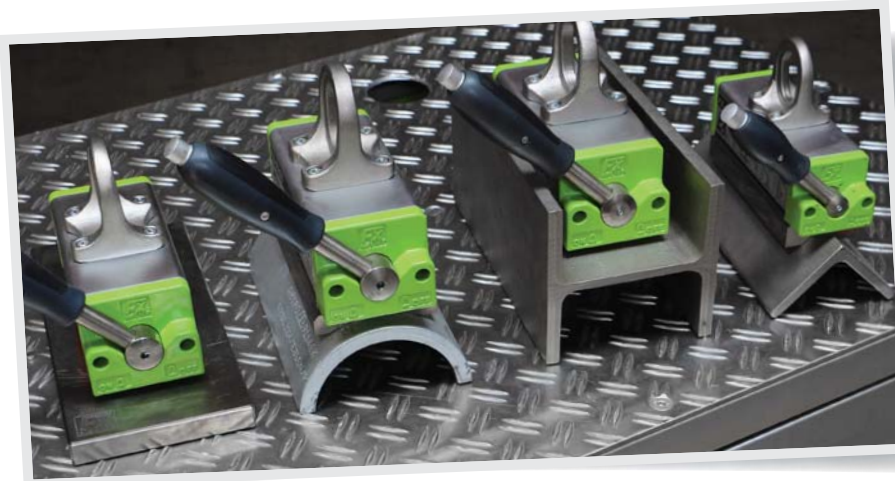
WARNING: Cancer and Reproductive Harm
www.P65Warnings.ca.gov



Mi Item #	Mfr Part #	Handle Length (in)	Magnet Height (in)	Working Load Capacity (lbs)
FX Series - Flat Materials				
08775795	FX0330	5.30	2.30	330
08775796	FX0660	7.50	3.00	660
08775797	FX1320	9.00	3.70	1320
08775798	FX2200	10.20	4.70	2200
08775799	FX4400	16.10	6.60	4400
08775800	FX6600	21.00	6.60	6600
FX Series - Thin Sheets & Pipe				
08775807	FXP0375	5.30	2.70	375
08775808	FXP0725	7.50	5.30	725
08775809	FXP1450	9.00	4.20	1450
FX Series - Round Materials				
08775801	FXR0220	5.30	2.70	220
08775802	FXR0500	7.50	3.50	500
08775803	FXR1000	9.00	4.40	1000
08775804	FXR1650	10.20	5.60	1650
08775805	FXR2650	16.10	7.50	2650
08775806	FXR4000	21.00	7.50	4000
FX Series - Beams, Angle Iron (90°), & Hot Parts				
08775810	FXV0440	5.30	3.00	440
08775811	FXV0880	7.50	3.80	880
08775812	FXV1775	9.00	4.50	1775
FXC Series - Round Materials, Rings, & Flange Plates				
08775813	FXC0385	7.50	5.10	385
08775814	FXC0550	7.50	5.70	550
08775815	FXC0990	7.50	6.10	990



Optimized Lift Magnets



ON/OFF
Lifting Magnets
Designed for
Your Application



FXP Series
Thin Sheets and Pipe



FXR Series
Round Material



FXC Series
*Rounds,
Rings, and
Flange Plates*



FX Universal Series
Flats and Round



FXV Series
*Rounds, Rings, Flange
Plates and Hot Parts*



Industrial Magnetics, Inc.
Making Things Better®

<https://tinyurl.com/r6c889o>

Some products may ship direct from the manufacturer.

Call. 800-526-9328 Click. [MotionIndustries.com](https://www.MotionIndustries.com) Visit. Over 550 Locations



Flexible Element

for E Series Close Coupled Couplings

Omega®

- Flexible portion of the Omega® coupling (includes mounting shoes and hardware)
- Urethane (orange) material
- Elastomeric coupling
- Manufacturer: Rexnord



WARNING: Cancer and Reproductive Harm
www.P65Warnings.ca.gov

Mi Item #	Mfr Part #	Model	
00506487	7300010	E3 Element	1.11
00506490	7300015	E4 Element	1.35
00506493	7300020	E5 Element	2.18
00506497	7300025	E10 Element	2.81
00506500	7300030	E20 Element	3.87
00506503	7300035	E30 Element	5.33

Flexible Element

for ES-R Series Spacer Couplings

Omega®

- Flexible portion of the Omega® coupling (includes mounting shoes and hardware)
- Urethane (orange) material
- Elastomeric coupling
- Manufacturer: Rexnord



WARNING: Cancer and Reproductive Harm
www.P65Warnings.ca.gov

Mi Item #	Mfr Part #	Model
00506528	7300090	ES5-R Element
00506525	7300085	ES4-R Element
00506531	7300095	ES10-R Element
00506522	7300080	ES3-R Element

Flexible Element

for ES Series Spacer Couplings

Omega®

- Flexible portion of the Omega® coupling (includes mounting shoes and hardware)
- Urethane (orange) material
- Elastomeric coupling
- Manufacturer: Rexnord



WARNING: Cancer and Reproductive Harm
www.P65Warnings.ca.gov

Mi Item #	Mfr Part #	Model
00506534	7300100	ES20 Element
00506538	7300105	ES30 Element

Elastomer Coupling Hub Half

Bored to Size

Omega®

- Split-in-half flex element design for simplified assembly and disassembly
- Interchangeable hubs allow for reduced inventory
- High misalignment capacity accommodates unavoidable misalignment with low reactionary forces
- Torsionally soft flex element cushions shock loads and vibration extending equipment life
- Polyurethane flex element does not require lubrication
- Polyurethane-to-metal bond eliminates assembly and slippage problems associated with mechanically clamped designs
- Hub half only
- Manufacturer: Rexnord



WARNING: Cancer and Reproductive Harm
www.P65Warnings.ca.gov

Mi Item #	Mfr Part #	Bore Size
3 HSB Standard Hub		
00506735	7300255	1-1/8"
00506740	7300265	1-3/8"
4 HSB Standard Hub		
00506746	7300285	1-1/8"
00506754	7300300	1-5/8"
5 HSB Standard Hub		
00506760	7300315	1-1/8"
00506770	7300330	1-5/8"
10 HSB Standard Hub		
00506777	7300345	1-1/8"
00506791	7300365	1-7/8"
20 HSB Standard Hub		
00506797	7300651	1-1/4"
00506803	7300655	1-7/8"
30 HSB Standard Hub		
00506813	7300664	2-1/8"
00506816	7300666	2-3/8"



» Rexnord Omega Couplings. An industry benchmark for over 45 years.

Reduce Maintenance Costs and Downtime — designed for quick replacement, Rexnord elastomeric elements can be installed without moving the driving or driven equipment from their mounted locations or removing the hubs.

Extended Life to Connected Equipment — this all-purpose coupling has excellent vibration damping capability.

Ask your Motion sales rep for more information about the complete line of Rexnord Omega and Viva Couplings:

**Omega Standard
Orange**



- General purpose applications requiring the highest misalignment capacity.

**Omega Heavy Duty
Yellow (HDY)**



- 25% greater torque capacity over Omega Standard Orange allows for possible coupling downsizing.

**Omega Hydrolytically Stable
Urethane Green (HSU)**



- Ideal in hot and humid conditions in addition to acidic and alkaline environments.
- Anti-corrosive coating available for use in highly caustic environments.

Viva



- The most torque-dense elastomeric coupling available.
- Hubs with two rows of radial holes grant more field spacing adjustability.



Some products may ship direct from the manufacturer.

Call. 800-526-9328 Click. MotionIndustries.com Visit. Over 550 Locations





Electronically-Enhanced Solenoid Valve

Class I, Division 2 Coil

Next Generation

- Increase in DC pressure ratings to AC levels on all products (up to a 500% improvement)
- Lower power operation
- Voltage ranging
- Built-in surge suppression
- Elimination of AC hum
- Increase in AC and DC operating temperatures
- Low solenoid temperature rise
- Longer coil life due to lower operating temperatures and electrical surge suppression
- Solenoid approvals to UL, CSA, and CE directives
- RoHS 2 Compliant

Two-Way Features

- Two-way (2/2) Next Generation solenoid valves with one inlet and one outlet port
- Control of air, water, light oil and non-corrosive media
- Normally closed (opens when energized) and normally open (closed when energized) operation

Three-Way Features

- Three-way (3/2) Next Generation solenoid valves with three ports and two orifices
- Control of air, water, light oil and non-corrosive media
- Normally closed (pressure to cylinder port when energized) operation
- Manufacturer: ASCO (Emerson)



WARNING: Cancer and Reproductive Harm
www.P65Warnings.ca.gov

Mi Item #	Mfr Part #	Voltage	Pipe Size	Orifice Size	Flow (Cv)	Operating Pressure Differential Air/Inert Gas (PSI)	Operating Pressure Differential Water (PSI)	Operating Pressure Differential Lt Oil @ 300 SSU (PSI)
3-Way, 2-Position								
Normally Closed—Brass								
06257731	EE8316P05412-24/DCY	12-24AC/DC	3/8"	5/8"	2.5	250	250	N/A
06257730	EE8316P05424-120Y	24-120AC/DC	3/8"	5/8"	2.5	250	250	N/A
Universal Operation (normally open or normally closed)—Brass								
06257732	EE8320P17412-24/DCY	12-24AC/DC	1/4"	7/64"	0.23	60	60	60
Normally Closed—Stainless Steel								
06257726	EE8314R12112-24/DCY	12-24AC/DC	1/4"	3/32"	0.15	205	205	190
06257733	EE8314R12612-24/DCY	12-24AC/DC	1/4"	1/8"	0.25	145	145	100
06257728	EE8314R12624-120Y	24-120AC/DC	1/4"	1/8"	0.25	145	145	100
Universal Operation (normally open or normally closed)—Stainless Steel								
06257727	EE8314R12312-24/DCY	12-24AC/DC	1/4"	3/64"	0.05	200	200	200
2-Way, 2-Position								
Normally Closed—Brass								
06257729	EE8210P093V12-24/DCY	12-24AC/DC	3/8"	5/8"	3	150	150	N/A



Electronically-Enhanced Solenoid Valve

Two-Way, Two-Position

Next Generation

- Increase in DC pressure ratings to AC levels on all products (up to a 500% improvement)
- Lower power operation
- Voltage ranging
- Built-in surge suppression
- Elimination of AC hum
- Increase in AC and DC operating temperatures
- Low solenoid temperature rise
- Longer coil life due to lower operating temperatures and electrical surge suppression
- Solenoid approvals to UL, CSA and CE directives
- RoHS 2 Compliant

Two-Way Features

- Two-way (2/2) Next Generation solenoid valves with one inlet and one outlet port
- Control of air, water, light oil and non-corrosive media
- Normally closed (opens when energized) and normally open (closed when energized) operation

Manufacturer: ASCO (Emerson)



WARNING: Cancer and Reproductive Harm
www.P65Warnings.ca.gov

Mi Item #	Mfr Part #	Voltage	Pipe Size	Orifice Size	Flow (Cv)	Operating Pressure Differential Air/Inert Gas (PSI)	Operating Pressure Differential Water (PSI)	Operating Pressure Differential Lt Oil @ 330 SSU (PSI)
Normally Closed—Brass Body								
06042907	8262R23224-120	24-120/50-60 Hz/AC/DC	1/4"	1/8"	0.35	540	395	360
05861520	8262R20224-120	24-120/50-60 Hz/AC/DC	1/4"	5/32"	0.52	300	225	225
06042908	8262R20824-120	24-120/50-60 Hz/AC/DC	1/4"	7/32"	0.73	125	125	125
05434160	8210P09312-24/DC	12-24AC/DC	3/8"	5/8"	3	150	150	N/A
05861414	8210P09324-120	24-120/50-60 Hz/DC	3/8"	5/8"	3	150	150	N/A
05434161	8210P09412-24/DC	12-24AC/DC	1/2"	5/8"	4	150	150	N/A
05861416	8210P09424-120	24-120/50-60 Hz/AC/DC	1/2"	5/8"	4	150	150	N/A
05436398	8210P09512-24/DC	12-24AC/DC	3/4"	3/4"	5	150	150	N/A
05861417	8210P09524-120	24-120/50-60 Hz/AC/DC	3/4"	3/4"	5	150	150	N/A
05434364	8210P00412-24/DC	12-24AC/DC	1"	1"	13	150	150	100
05861418	8210P00424-120	24-120/50-60 Hz/AC/DC	1"	1"	13	150	150	100
05436288	8210P02212-24/DC	12-24AC/DC	1-1/2"	1-1/4"	22.5	150	150	100
05861426	8210P02224-120	24-120/50-60 Hz/AC/DC	1-1/2"	1-1/4"	22.5	150	150	100
05440244	8210P10012-24/DC	12-24AC/DC	2"	1-3/4"	43	150	125	90
05861516	8210P10024-120	24-120/50-60 Hz/AC/DC	2"	1-3/4"	43	150	125	90
Normally Open—Brass Body								
05436808	8210P03412-24/DC	12-24AC/DC	1/2"	5/8"	4	150	150	125
05861521	8210P03424-120	24-120/50-60 Hz/AC/DC	1/2"	5/8"	4	150	150	125
05434365	8210P03512-24/DC	12-24AC/DC	3/4"	3/4"	5.5	150	150	125
05861522	8210P03524-120	24-120/50-60 Hz/AC/DC	3/4"	3/4"	5.5	150	150	125
Normally Closed—Stainless Steel Body								
06042909	8262R22024-120	24-120/50-60 Hz/AC/DC	1/4"	5/32"	0.52	300	225	225
06042910	8262R22624-120	24-120/50-60 Hz/AC/DC	1/4"	7/32"	0.73	125	125	125
05434186	8210P08712-24/DC	12-24AC/DC	1/2"	5/8"	4	150	150	125
06042911	8210P08724-120	24-120/50-60 Hz/AC/DC	1/2"	5/8"	4	150	150	125
05436809	8210P08812-24/DC	12-24AC/DC	3/4"	5/8"	4.5	150	150	125
06042912	8210P08824-120	24-120/50-60 Hz/AC/DC	3/4"	5/8"	4.5	150	150	125

Some products may ship direct from the manufacturer.

Call. 800-526-9328 Click. MotionIndustries.com Visit. Over 550 Locations



Simmerring Oil Seal

B1

Standard types with open outer metal sleeve

- Broad range of applications in every sector of industry
- Metal housing for especially firm and precise seating in the bore
- Additional dust lip as additional seal against moderate to medium dust and dirt ingress from outside
- Manufacturer: Freudenberg Nok



WARNING: Cancer and Reproductive Harm
www.P65Warnings.ca.gov

Mi Item #	Mfr Part #	Lip Material	Shaft Dia	OD	Width
07318151	20X30X7B1N	72 NPR 902	20 mm	30 mm	7 mm
07318205	28X40X7B1N	72 NPR 902	28 mm	40 mm	7 mm
07317949	15X35X7B1N	72 NPR 902	15 mm	35 mm	7 mm
07318215	30X42X7B1N	72 NPR 902	30 mm	42 mm	7 mm
07318180	25X38X7B1N	72 NBR 902	25 mm	38 mm	7 mm
07318067	35X47X7B1N	72 NBR 902	35 mm	47 mm	7 mm
07318052	20X35X7B1N	72 NBR 902	20 mm	35 mm	7 mm
07318299	45X60X8B1N	72 NBR 902	45 mm	60 mm	8 mm
07318317	50X68X8B1N	72 NBR 902	50 mm	68 mm	8 mm
07318057	25X35X7B1N	72 NBR 902	25 mm	35 mm	7 mm
07318273	40X52X7B1N	72 NBR 902	40 mm	52 mm	7 mm
07318056	22X32X7B1N	72 NBR 902	22 mm	32 mm	7 mm
07318191	25X52X8B1N	72 NBR 902	25 mm	52 mm	8 mm

Simmerring Oil Seal

BA

- Standard types according to DIN 3760, with outer elastomer sleeve
- Broad range of applications in every sector of industry
- Reliable sealing of the housing bore, even with increased roughness of the bore, thermal expansion and split housings, thus a sealing of low viscosity and gaseous media also possible
- Additional dust lip as additional seal against moderate and medium dust and dirt ingress from outside
- Manufacturer: Freudenberg Nok



WARNING: Cancer and Reproductive Harm
www.P65Warnings.ca.gov

Mi Item #	Mfr Part #	Lip Material	Shaft Dia	OD	Width
06834316	10X19X7BAN	72 NBR 902	10 mm	19 mm	7 mm
07340855	32X52X7BAN	72 NBR 902	32 mm	52 mm	7 mm
07318187	25X47X7BAN	72 NBR 902	25 mm	47 mm	7 mm
07318184	25X42X7BAN	72 NBR 902	25 mm	42 mm	7 mm
06835693	70X110X8BAN	72 NBR 902	70 mm	110 mm	8 mm
07350660	50X90X10BAN	72 NBR 902	50 mm	90 mm	10 mm
07350654	40X62X7BAN	72 NBR 902	40 mm	62 mm	7 mm
07318241	33X45X7BAN	72 NBR 902	33 mm	45 mm	7 mm



Discover the benefits and cost savings
of energy conservation.



Scan To **Learn More**
tinyurl.com/Mi-Energy



Call. 800-526-9328
Click. MotionIndustries.com
Visit. Over 550 Locations
f i y t w

LEARN HOW THE MI ENERGY SERVICES TEAM CAN HELP YOU START SAVING TODAY.



Simmerring Oil Seal

with Spring

BAUMSL

- Standard types according to DIN 3760 with outer elastomer sleeve and spring-loaded fluorine rubber sealing lip for high thermal and chemical requirements
- Broad range of possible applications in every sector of industry
- Increased thermal stability and chemical resistance
- Reliable sealing of the housing bore, even with increased roughness of the bore, thermal expansion and split housings, thus a sealing of low viscosity and gaseous media also possible
- Advantages when sealing low viscosity and gaseous media
- Additional dust lip as additional seal against moderate and medium dust and dirt ingress from outside
- Manufacturer: Freudenberg Nok



WARNING: Cancer and Reproductive Harm
www.P65Warnings.ca.gov

Mi Item #	Mfr Part #	Lip Material	Shaft Dia	OD	Width
07340843	35X47X7BASLN	72 NBR 902	35 mm	47 mm	7 mm
07318463	25X47X7BASLN	72 NBR 902	25 mm	47 mm	7 mm
07317874	50X62X7BASLN	72 NBR 902	50 mm	62 mm	7 mm
07318462	25X40X8BASLN	72 NBR 902	25 mm	40 mm	8 mm
06835297	45X75X8BASLN	72 NBR 902	45 mm	75 mm	8 mm

Simmerring Oil Seal

with Spring

BAUM

- Standard types according to DIN 3760 with outer elastomer sleeve and spring-loaded fluorine rubber sealing lip for high thermal and chemical requirements
- Broad range of possible applications in every sector of industry
- Increased thermal stability and chemical resistance
- Reliable sealing of the housing bore, even with increased roughness of the bore, thermal expansion and split housings, thus a sealing of low viscosity and gaseous media also possible
- Advantages when sealing low viscosity and gaseous media
- Additional dust lip as additional seal against moderate and medium dust and dirt ingress from outside
- Manufacturer: Freudenberg Nok



WARNING: Cancer and Reproductive Harm
www.P65Warnings.ca.gov

Mi Item #	Mfr Part #	Lip Material	Shaft Dia	OD	Width
06834717	25X40X7BAV	75 FKM 585	25 mm	40 mm	7 mm
06834422	15X30X7BAN	72 NPR 902	15 mm	30 mm	7 mm
07318301	45X62X7BAN	72 NPR 902	45 mm	62 mm	7 mm
07318168	22X40X7BAN	72 NPR 902	22 mm	40 mm	7 mm
06834694	25X35X7BAN	72 NPR 902	25 mm	35 mm	7 mm
06834597	20X40X7BAN	72 NPR 902	20 mm	40 mm	7 mm
07318190	25X52X7BAN	72 NPR 902	25 mm	52 mm	7 mm
06834708	25X38X7BAV	75 FKM 585	25 mm	38 mm	7 mm



CUSTOMIZED SOLUTIONS FOR OEM AND MRO NEEDS.

We focus on value-added capabilities and services to support your needs, including:

- Heavy-Duty Belting
- Lightweight Belting
- Bulk Hose & Assemblies
- Gaskets
- Seals
- And Much More!



Call. 800-526-9328
Click. MiConveyanceSolutionsGroup.com
Visit. Over 550 Locations
f @ in p t v y mi

Some products may ship direct from the manufacturer.

Call. 800-526-9328 **Click.** MotionIndustries.com **Visit.** Over 550 Locations





Chicago Pneumatic

Angle Sander

- For sanding and finishing
- 1.5 HP (1,100W) governed motor allows industrial performance in intensive material removal applications
- Rotative air swivel allows better and easier tool operation, avoiding air hose knot
- Unique silencer foam damps noise emissions down to 86 dB
- Thermal insulating sleeve provides operator comfort while offering a low diameter for comfortable handling
- Streamlined safety lever allows heavy tool operation while wearing heavy gloves, and can be easily oriented downwards
- Unique keyless adjustable guard helps to quickly adjust the guard position to best suit the working position and deflecting sparks
- Spindle lock allows fast abrasive replacement to reduce tool downtime
- Manufacturer: Chicago Pneumatic



WARNING: Cancer and Reproductive Harm
www.P65Warnings.ca.gov

Mi Item #	Mfr Part #	Max Wheel Capacity	Free Speed (RPM)	Spindle
07747003	CP3550-120AB	5"	12,000	5/8"
08775741	CP3550-085AA	7"	8,500	M14
08775742	CP3550-085AB	7"	8,500	5/8"

Chicago Pneumatic

Angle Sander

Low Speed

- 3,000 rpm range for sanding of stainless steel and polishing applications where high torque is necessary
- Spindle lock button for easy and fast change of abrasive
- Gearbox to reduce speed to 3,000 rpm and increase torque for low speed polishing and sanding operations
- Applications: Sanding, finishing, polishing, surface cleaning and preparation
- Manufacturer: Chicago Pneumatic



WARNING: Cancer and Reproductive Harm
www.P65Warnings.ca.gov

Mi Item #	Mfr Part #	Spindle Thread
08775748	CP3550-030AA	M14
08775749	CP3550-030AB	5/8"

Chicago Pneumatic

Angle Grinder

Pneumatic

- For contouring, chamfering, cleaning and fettling
- 1.5 hp (1,100W) governed motor allows industrial performance in intensive material removal applications
- Rotative air swivel allows better and easier tool operation, avoiding air hose knot
- Unique silencer foam damps noise emissions down to 86 dB
- Thermal insulating sleeve provides operator comfort while offering a low diameter for comfortable handling
- Streamlined safety lever allows heavy tool operation while wearing heavy gloves, and can be easily oriented downwards
- Unique keyless adjustable guard helps to quickly adjust the guard position to best suit the working position and deflecting sparks
- Spindle lock allows fast abrasive replacement to reduce tool downtime
- Manufacturer: Chicago Pneumatic



WARNING: Cancer and Reproductive Harm
www.P65Warnings.ca.gov

Mi Item #	Mfr Part #	Max Wheel Capacity	Free Speed (RPM)	Spindle
07747000	CP3550-120AC4	4"	12,000	3/8"
07747001	CP3550-120AB45	4-1/2"	12,000	5/8"
07747002	CP3550-120AB5	5"	12,000	5/8"
08775743	CP3550-100AB6	6"	10,000	5/8"

Chicago Pneumatic

Die Grinder

1/4" Collet

- Top productivity thanks to high power and great comfort
- Unique feature to lock collet holder for easy change of mounted point/carbide burr
- Excellent durability
- Applications: Chamfering, finishing with 1/4" mounted wheels and carbide burrs
- Manufacturer: Chicago Pneumatic



WARNING: Cancer and Reproductive Harm
www.P65Warnings.ca.gov

Mi Item #	Mfr Part #	Free Speed (RPM)
08775744	CP3550-120	12,000
08775745	CP3550-180	18,000
Extended		
08775746	CP3550-120ES	12,000
08775747	CP3550-180ES	18,000



CP3550 Series

1.5 hp / 1100 W industrial angle & die grinders and sanders



***One industrial range
for all your grinding
& sanding needs:
high-quality finish
with minimal efforts***

**People.
Passion.
Performance.**



 **Chicago
Pneumatic**

Some products may ship direct from the manufacturer.

Call. 800-526-9328 Click. MotionIndustries.com Visit. Over 550 Locations

 **MOTION®
INDUSTRIES**
Keeping Industry in Motion



Impact Wrench

3/8" Drive

2115 QXPA Series

- Built on the hardworking and respected foundation laid by the 2135TIMAX
- Light, quiet and powerful, delivers an incredible level of performance and power at a cost that will not punish your wallet
- Max reverse torque: 300 ft-lbs
- Quiet technology reduces the sound of the tool, sparing your ears without sacrificing a single ounce of power
- Manufacturer: Ingersoll Rand



WARNING: Cancer and Reproductive Harm
www.P65Warnings.ca.gov

Mi Item #	Mfr Part #	Drive Type	Configuration
08272723	2115QXPA	Square	Pistol

Backfill Tamper

- With dual-action sand wipers, a built-in muffler and a side exhaust, this tool is built for heavy use
- Commonly used by municipal and utility crews for compacting around both utility line repairs and new installations such as street lights, fire hydrants, and telephone poles prior to pouring concrete
- Ideal for back filling around foundations or other tight areas
- Sand-wiper seal prevents dirt and grit from getting inside the tool
- Thanks to a built-in lubricator, these tools are built to run smoothly and last, while extending overall operating life
- Manufacturer: Ingersoll Rand



WARNING: Cancer and Reproductive Harm
www.P65Warnings.ca.gov

Mi Item #	Mfr Part #	Bore	Piston Stroke
07743911	441A2	2"	4"

Impact Wrench Kit

Compact

IQV20 Series™

- Designed to provide technicians the power they need without adding extra weight to the tool
- With 4 power modes, you can adjust a dial instead of changing tools to deliver the right amount of torque when you need it and eliminate rework
- The variable-speed switch with electronic brake provides MAX control of the tool
- Protected by a chemical-resistant composite housing and a patented steel-reinforced frame, built to withstand repeated drops onto concrete and exposure to shop fluids
- Compact ergonomic design and lightweight build can easily access tight spaces, giving you access no matter where your work may be hiding
- Built-in 360° COB LED light casts a wide beam to give you excellent visibility with no shadows
- Includes: Battery, tool, charger and bag
- Manufacturer: Ingersoll Rand



WARNING: Cancer and Reproductive Harm
www.P65Warnings.ca.gov

Mi Item #	Mfr Part #	Drive Size/Type	Battery	Max Torque (ft-lbs)	Nut Busting Torque (ft-lbs)
08462403	W5133-K22	3/8", Square Socket Retaining Ring	(1) BL2012, (1) BL2022	295	400
08462405	W5153-K22	1/2", Square Socket Retaining Ring	(1) BL2012, (1) BL2022	295	400

Backfill Tamper

- With dual-action sand wipers, a built-in muffler and a side exhaust, this tool is built for heavy use
- Commonly used by municipal and utility crews for compacting around both utility line repairs and new installations such as street lights, fire hydrants, and telephone poles prior to pouring concrete
- Ideal for back filling around foundations or other tight areas
- Sand-wiper seal prevents dirt and grit from getting inside the tool
- Thanks to a built-in lubricator, these tools are built to run smoothly and last, while extending overall operating life
- Manufacturer: Ingersoll Rand



WARNING: Cancer and Reproductive Harm
www.P65Warnings.ca.gov

Mi Item #	Mfr Part #	Bore	Piston Stroke
07743911	441A2	2"	4"



Air Chain Hoist

MLK Series

- Ideal for harsh environments found in steel mills, foundries and electroplating operations, also ideal for high-duty cycle applications
- Pull chain or pilot pendent controls provide precise spotting capabilities
- Self adjusting, air operated disc brake is spring applied and air released
- Wear tested to over 1 million cycles before replacement
- All rotating parts are supported by either ball or roller type bearings
- Unique planetary gearing system assures long life
- Swivel top hook suspension
- Pendant control
- Lift: 10'
- Thoughtful design includes parts interchangeability, inlet swivels, exhaust air chain lubrication, control adjustment screws and easy conversion from pull chain to pendent control
- Meets ASME/ANSI B30.16 standards
- Rated as HMI duty classification A5, severe-duty (this equates to FEM 9.511 duty classification 2m)
- Manufacturer: Ingersoll Rand



WARNING: Cancer and Reproductive Harm
www.P65Warnings.ca.gov

Mi Item #	Mfr Part #	Capacity (lbs)	Chain Falls	Lower Hook
05654118	ML500K-2C10-C6U	1,100	1	Steel Snap w/ Fabric Chain Container
03257396	ML1000K-2C10-C6	2,200	2	Steel Snap

Air Die Grinder

5100 MAX Series

- The performance and comfort you need for the toughest jobs
- These best-in-class die grinders will help make your job faster, easier and better
- Lube-free motor design eliminates oil contamination
- Low profile throttle lever to reduces hand fatigue
- 1/4" NFPT air inlet, 1/4" and 6 mm outlet (collet size), 3/8" minimum hose size
- Horsepower: 0.4
- The 5102MAX also includes a state-of-the art spindle lock for faster abrasive changeovers
- Manufacturer: Ingersoll Rand



WARNING: Cancer and Reproductive Harm
www.P65Warnings.ca.gov

Mi Item #	Mfr Part #	Style	RPM
05212061	5102MAX	Angle	20,000
05212062	5108MAX	Straight	25,000

Air Angle Die Grinder

MAX Series

- 0.88 hp and 12,000 rpm motor delivers the power you need to grind through the toughest jobs
- Internal governor maximizes speed under load, increasing your rate of material removal
- Lower weight (less than 3.5 lbs) and enhanced grip design enables extended usage with less fatigue
- Built-in lubricating wick optimizes the life of the angle gear set by improving lubrication to the bevel and pinion gear set
- Air inlet: 1/4" NPTF
- Recommended hose size: 3/8"
- Manufacturer: Ingersoll Rand



WARNING: Cancer and Reproductive Harm
www.P65Warnings.ca.gov

Mi Item #	Mfr Part #	Wheel Size
03579568	3445MAX	4-1/2"

Some products may ship direct from the manufacturer.

Call. 800-526-9328 Click. MotionIndustries.com Visit. Over 550 Locations



Indicator Paste

Tamper-Proof

DYKEM Cross Check™ Torque Seal®

- Convenient visual method for identification of vibratory loosening or tampering in nuts, bolts, fasteners and assemblies
- Highly visible marks will be easily broken if parts are tampered with or become loose, providing warranty protection against tampering
- Orange, green, red, yellow and blue fluoresce under black/UV light
- Excellent adhesion to metal and other substrates
- Safe for most surfaces
- Dry to touch/handle in 30 to 40 minutes
- 80% curing occurs between 48 to 72 hours, completion takes place between 7 to 10 days
- Exposing to elevated temperature or blowing hot air can speed up the drying/curing process
- Boeing specification: BMS8-45 Type II
- Manufacturer: DYKEM (ITW Pro Brands)



WARNING: Cancer and Reproductive Harm
www.P65Warnings.ca.gov

Mi Item #	Mfr Part #	Color
03277094	83314	Orange

Degreaser

PreSolve® Orange

- High performance, cleans on contact
- Ideal for removing grease, tar, oil and adhesives
- Fast-acting, deep penetration
- Does not contain chlorinated solvents
- Flash point above 100°F (38°C)
- Non conductive
- Low residue
- Safe on all metals and most plastics
- Inverta spray valve allows user to spray in an upright or inverted position
- NSF® C1 registered #129025
- Manufacturer: LPS (ITW Pro Brands)



WARNING: Cancer and Reproductive Harm
www.P65Warnings.ca.gov

Mi Item #	Mfr Part #	Container	Case Qty
00789946	01420	15 oz Aerosol	12

Contact Cleaner

NoFlash® Electro

- Non-flammable
- Safe to use on most surfaces, test on plastics
- Quick penetration
- Unique alternative to HCFC cleaners
- Inverta spray valve allows user to spray in an upright or inverted position
- VOC-compliant in California
- NSF® Certified: K2 Registration #131303
- Applications: Contacts, controls, circuit breakers, generators, instrumentation, meters, printed circuit boards, relays and controls
- Manufacturer: LPS (ITW Pro Brands)



WARNING: Cancer and Reproductive Harm
www.P65Warnings.ca.gov



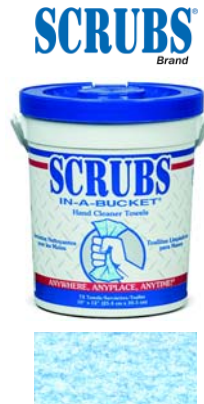
Mi Item #	Mfr Part #	Container	Case Qty
00825823	04016	16 oz Aerosol	12



Hand Cleaner Towels

SCRUBS® In-A-Bucket®

- NO SOAP! NO WATER! NO PROBLEM!™
- Clean, citrus fragrance
- Advanced cleaning power
- For use on hands and surfaces
- No sticky residue and no rinsing required
- Removes dirt, tar, oils, grease, paints, adhesives, epoxies, caulks, inks and dyes, urethanes, lubricants, "Icky-PIC", cable jelly, asphalt
- Manufacturer: Scrubs (ITW Pro Brands)



WARNING: Cancer and Reproductive Harm
www.P65Warnings.ca.gov

Mi Item #	Mfr Part #	Container
02422830	42272	72 Towel

Hand Sanitizer Wipes

SCRUBS®

- Kills 99.9% of germs
- Kills MRSA
- Dissolves bio-film
- Prevents cross-contamination
- Replaces alcohol gels, which do not remove contaminants
- Helps reduce the risk of infection and disease
- Broad spectrum
- Can be used where soap and water are not available
- Manufacturer: Scrubs (ITW Pro Brands)



WARNING: Cancer and Reproductive Harm
www.P65Warnings.ca.gov

Mi Item #	Mfr Part #	Container
02517719	90985	85 Wipes/Bucket

Scouring Pad

Metal Detectable

DETEX®

- Durable, long life pad
- High visibility blue color
- Reduces concerns of food product contamination
- Applications: Kettles, conveyor belts, freezer belts, fryers, ovens, breadings and mixing equipment, grinders
- Manufacturer: LPS (ITW Pro Brands)



WARNING: Cancer and Reproductive Harm
www.P65Warnings.ca.gov

Mi Item #	Mfr Part #	Pad Size	Case Qty
08473179	59660	5.9" x 8.9"	60

Chain Lubricant

Food-Grade

DETEX®

- Features DETEX® metal and x-ray detectable plastic components
- Foaming action provides extra penetration and lubrication
- Oily, wet film extends chain life
- High flash point of 405°F (207°C)
- Resists sling off and water wash out
- Low flammability
- NSF® Registered H1 #132899
- Applications: Chains, channels, conveyors, filling equipment, food racks, food service carts, gears, open drives, pins, rollers, slicers and sliding tracks
- Manufacturer: LPS (ITW Pro Brands)



WARNING: Cancer and Reproductive Harm
www.P65Warnings.ca.gov

Mi Item #	Mfr Part #	Container	Case Qty
05018903	06016	12 oz Aerosol	12

Some products may ship direct from the manufacturer.

Call. 800-526-9328 Click. MotionIndustries.com Visit. Over 550 Locations



Nut Driver

7-in-1

- Seven sizes in one tool enables easy, one-handed driving
- Strong, rare earth magnets securely hold nuts and bolts in place (1/4", 5/16", 11/32", 3/8", 1/2")
- Spring coil holds nuts and bolts without the use of magnets (7/16", 9/16")
- Hollow shafts for driving nuts deep onto bolts or threaded rod (1/4", 5/16", 3/8", 7/16", 9/16")
- 1/2" socket conveniently stores in the handle while using 1/4" socket
- Heavy-duty handle and shaft exceed the torque performance of regular nut drivers
- Wrench-assist on handle adds torque when working on tough jobs
- Cushion-grip handle provides all day comfort
- Color-coded bands help professionals easily identify needed sizes
- Manufacturer: Klein Tools



WARNING: Cancer and Reproductive Harm
www.P65Warnings.ca.gov

Mi Item #
07838793

Mfr Part #
32807MAG

Hybrid Pliers

- Multi-purpose tool saves time and lessens the tool count
- Strips 10 awg to 14 awg solid and 12 awg to 16 awg stranded wire
- High-leverage design for 34-percent more cutting power
- Wide knurled head easily grabs and twists wires
- 6-32 and 8-32 bolt shearing
- Crimps non-insulated connectors, lugs and terminals
- Full length, induction hardened cutting knives for hard wire
- Dual-material Journeyman grips are more comfortable and last longer than other handles
- Manufacturer: Klein Tools



WARNING: Cancer and Reproductive Harm
www.P65Warnings.ca.gov

Mi Item #
07741953

Mfr Part #
J215-8CR

Overall Length
8"

Jaw Length
2"

Pocket Knife Spring-Assisted Open

- 440A stainless steel, versatile drop point blade knife with both a fine and serrated edge
- Liner lock keeps the knife open
- Spring-loaded opening mechanism enables quick, easy deployment of the blade
- Low-carry pocket clip allows the knife to sit low and out of the way
- Safety lock keeps knife closed when stored
- Dual thumb studs for both left- or right-hand opening
- Lanyard hole for tethering
- Manufacturer: Klein Tools



WARNING: Cancer and Reproductive Harm
www.P65Warnings.ca.gov

Mi Item #
07838885

Mfr Part #
44223

Overall Length
8.1"

Blade Length
3.5"

Blade Type
Half-Serrated Drop Point

Wire Stripper

Heavy-Duty

Klein-Kurve®

- Robust forged steel makes this four times stronger than traditional Klein wire strippers
- Precision ground stripping holes for 8 to 16 awg solid and 10 awg to 18 awg stranded wire
- Knurled jaw for twisting, grabbing and looping up to three wires at a time
- 6-32 and 8-32 screw shearing
- Induction hardened cutting knives for long life
- Hot-riveted joint ensures smooth action and no handle wobble
- Coil spring provides fast, self-opening action
- Manufacturer: Klein Tools



WARNING: Cancer and Reproductive Harm
www.P65Warnings.ca.gov

Mi Item #
07747981

Mfr Part #
K12054

Overall Length
8"



Side-Cutting Pliers

High-Leverage

- Rivet is closer to the cutting edge for 46% greater cutting and gripping power than other plier designs
- Hot-riveted joint ensures smooth action and no handle wobble
- Induction hardened cutting knives for long life
- Streamlined design with sure-gripping, crosshatched knurled jaws
- Plastic-dipped handles for comfort and ease of identification
- Custom US-made tool steel
- Handle color: Dark blue
- Manufacturer: Klein Tools



WARNING: Cancer and Reproductive Harm
www.P65Warnings.ca.gov

Mi Item #	Mfr Part #	Overall Length	Jaw Length	Nose Style
02736953	D213-9NE	9-3/8"	1.594"	New England

Cable Cutter

Ratcheting

- High-leverage ratchet mechanism for single-handed cutting of copper and aluminum cables, leaving no burrs or sharp edges
- Patented two-step ratchet mechanism requires fewer strokes per cut
- Quick release lever opens blades easily in every cutting position, allows removal of the cable before completion of cut
- Precision ratcheting mechanism holds cable tight and allows rapid, straight cuts with minimum effort
- Manufacturer: Klein Tools



WARNING: Cancer and Reproductive Harm
www.P65Warnings.ca.gov

Mi Item #	Mfr Part #	Overall Length
03089974	63060	10"

Bucket

Canvas—Leather Bottom

- 100 lb (45.4 kilogram) maximum load rating
- Web handle extends down the sides of the bucket for added strength
- Durable, straight wall and tapered wall buckets are made of heavy-duty canvas
- High density polyethylene top ring for strength and chemical resistance
- Manufacturer: Klein Tools



WARNING: Cancer and Reproductive Harm
www.P65Warnings.ca.gov

Mi Item #	Mfr Part #	Extra Features	Rated Load
03089924	5104	N/A	100 lbs

Journeyman Tool Set

41-Piece

- Includes: Side-cutting plier, diagonal-cutting plier, (2) long-nose pliers, pump plier, crimping/cutting tool, cable cutter, (2) Klein-Kurve® wire strippers/cutters, Klein-Kurve® utility knife, (2) adjustable wrenches, (2) keystone-tip screwdrivers, (5) cabinet-tip screwdrivers, (2) Phillips-tip screwdrivers, wire-bending screwdriver, (2) square-recess tip screwdrivers, (2) Rapi-Drive® screwdrivers, conduit fitting and reaming screwdriver, 12-piece hex-key set, (7) nut drivers, awl, torpedo level, cable splicer's kit, canvas zipper bag and protective eye wear
- Manufacturer: Klein Tools



WARNING: Cancer and Reproductive Harm
www.P65Warnings.ca.gov

Mi Item #	Mfr Part #
05692906	80141

Some products may ship direct from the manufacturer.

Call. 800-526-9328 Click. MotionIndustries.com Visit. Over 550 Locations



Acrylic Alkyd Enamel Paint

Tough Coat®

- Exclusive EZ TOUCH 360® dial patented valve sprays a horizontal or vertical pattern and requires 50% less finger pressure than any other paint valve
- High-solids formula ensures maximum coverage and performance
- Delivers the ultimate in protection, durability, high gloss and color retention
- Specially formulated for a variety of industrial applications
- Ideal for light- to heavy-duty painting projects, both indoors and outdoors
- Tough, protective coating resists chipping and peeling
- Dries to touch in 15 minutes
- 12 ounce aerosol
- Case quantity: 12 (priced each)
- Manufacturer: Krylon Industrial Paints



WARNING: Cancer and Reproductive Harm
www.P65Warnings.ca.gov

Mi Item #	Mfr Part #	Color
00878038	A01310007	OSHA Yellow
00879367	A01770007	OSHA Black
00879435	A01800007	OSHA White

Acrylic Lacquer Enamel Paint

Acryli-Quik™

- Specifically formulated for industrial maintenance and touch up applications
- Performance is exceptional, and the broad selection includes interior/exterior acrylic lacquers and primers
- High solids, fast-drying times and excellent appearance
- Provides all of the superior characteristics that customers have come to expect from the Krylon brand
- 12 oz aerosol
- Manufacturer: Krylon Industrial Paints



WARNING: Cancer and Reproductive Harm
www.P65Warnings.ca.gov



Mi Item #	Mfr Part #	Color
01473554	K01601A07	Gloss Black
Primers		
01473552	K01318A07	Gray Primer



PRODUCT SPECIALS

CHECK OUT OUR LATEST PROMOTIONS

Scan to view promotions



<https://tinyurl.com/ykxse3em>



Do you need help reducing energy consumption and operating costs?

Our Energy Services team provides a comprehensive report with energy-efficient and sustainable energy solutions specific to your facility,

THE MI ENERGY SERVICES TEAM CAN EVALUATE:



Compressed Air



Lighting



Solar PV/Thermal



Steam



Electrical System
Efficiency



Mechanical Efficiency

LEARN HOW THE MI ENERGY SERVICES TEAM CAN HELP YOU START SAVING TODAY.



Call. 800-526-9328
Click. MotionIndustries.com
Visit. Over 550 Locations



Scan To **Learn More**
tinyurl.com/MI-Energy



Threadlocker

Medium Strength—Blue

243™

- Primerless on inactive and active metals
- Upgraded temperature resistance up to 360°F
- Oil-tolerant curing on as-received fasteners without cleaning
- For locking and sealing threaded fasteners between 1/4" and 3/4"
- Prevents loosening from shock and vibration
- Removable with standard hand tools
- Manufacturer: Loctite



WARNING: Cancer and Reproductive Harm
www.P65Warnings.ca.gov

Mi Item #	Mfr Part #	Container	Pkg Qty
04335875	1329837	10 mL Bottle	10
04335876	1329467	50 mL Bottle	10
04335877	1329505	250 mL Bottle	10

Threadlocker

High Strength

263™

- Prevents loosening and leakage from shock and vibration
- Particularly suited for heavy-duty applications, bolts up to 3/4"
- Primerless performance on both inactive and active metals
- Upgraded temperature resistance, up to 360°F (182°C)
- Oil-tolerant curing on as-received fasteners without cleaning
- Manufacturer: Loctite



WARNING: Cancer and Reproductive Harm
www.P65Warnings.ca.gov

Mi Item #	Mfr Part #	Container	Pkg Qty
04335871	1330583	10 mL Bottle	10
04335872	1330585	50 mL Bottle	10
04335873	1330335	250 mL Bottle	10

Threadlocker

Low Strength

222MS™

- For fastener diameters of 1/4" and smaller
- Controlled lubricity allows for accurate clamp loads
- Removable with standard hand tools
- Manufacturer: Loctite



WARNING: Cancer and Reproductive Harm
www.P65Warnings.ca.gov

Mi Item #	Mfr Part #	Container	Pkg Qty
00770726	135333	10 mL Bottle	10
00772687	135334	50 mL Bottle	10
00774807	135335	250 mL Bottle	10

Threadlocker

Medium- to High-Strength Green—Wicking-Grade

290™

- For pre-assembled bolts up to 1/2"
- Penetrates assembled, torqued threads by capillary action
- Secures set screws and other assemblies after settings are completed
- Seals welds and porous metal parts
- Manufacturer: Loctite



WARNING: Cancer and Reproductive Harm
www.P65Warnings.ca.gov

Mi Item #	Mfr Part #	Container	Pkg Qty
00770851	233731	10 mL Bottle	10
00772885	135392	50 mL Bottle	10
00774999	135393	250 mL Bottle	10

LOCTITE®

Threadlocker Stick

Medium Strength—Blue

248™

- Convenient semi-solid formula prevents drips and spills
- Secures and seals bolts, nuts and studs to prevent loosening due to vibration
- Works on all metals, including passive substrates such as stainless steel, aluminum and plated surfaces without using primer
- Proven to be tolerant of minor contamination due to industrial oils, e.g. motor oils, corrosion prevention oils and cutting fluids
- Easy disassembly with hand tools
- Manufacturer: Loctite



WARNING: Cancer and Reproductive Harm
www.P65Warnings.ca.gov

Mi Item #	Mfr Part #	Container	Pkg Qty
02565597	826034	9 g Stick	10

Threadlocker

High Strength

QuickStix™ 268™

- For the permanent locking and sealing of threaded fasteners
- Prevents loosening and leakage from shock and vibration
- Cures when confined in the absence of air between metal surfaces
- Particularly suited for heavy-duty applications, bolts up to 3/4"
- Primerless performance on both inactive and active metals
- Oil-tolerant curing on as-received fasteners without cleaning
- Manufacturer: Loctite



WARNING: Cancer and Reproductive Harm
www.P65Warnings.ca.gov

Mi Item #	Mfr Part #	Container	Pkg Qty
02565599	826036	9 g Tube	10

Threadlocker

High-Strength—Low Viscosity

271™

- For fasteners up to 1" (25 mm) diameter
- Manufacturer: Loctite



WARNING: Cancer and Reproductive Harm
www.P65Warnings.ca.gov

Mi Item #	Mfr Part #	Container	Pkg Qty
00780526	27121	10 mL Bottle	10
00780490	27131	50 mL Bottle	10
00780609	27141	250 mL Bottle	10

Instant Adhesive Gel

Hybrid

4070

- Cures fast like an instant adhesive with the strength of a structural adhesive
- High gap filling capability—excellent for universal repairs
- Rapid bond strength on metal, plastics, rubber, wood, paper, leather—opens repair possibilities
- Non-drip formula gel product stays where applied
- Good moisture, temperature, UV and chemical resistance for long-lasting reliable repairs
- Convenient, ready-to-use syringe package with nozzles
- For additional mixing nozzles, order Mi Item #07563293
- Manufacturer: Loctite



WARNING: Cancer and Reproductive Harm
www.P65Warnings.ca.gov

Mi Item #	Mfr Part #	Container
07459474	2264448	11 g Dual Cartridge

Some products may ship direct from the manufacturer.

Call. 800-526-9328 Click. MotionIndustries.com Visit. Over 550 Locations



Cordless Impact Driver Kit

Sub-Compact Brushless

18V LXT®

- Ideal for working in tight spaces
 - Assist mode (A-mode) feature helps eliminate "screw cam-out" and "cross threading" by driving at low speed until tightening begins
 - Dual LED lights illuminate the work area
 - Ergonomically designed handle with rubberized soft grip provides increased comfort
 - Extreme Protection Technology (XPT™) is engineered for improved dust and water resistance for operation in harsh conditions
 - Equipped with Star Protection Computer Controls™ to protect against overloading, over-discharging and overheating
- BL™ Brushless Motor
- Delivers 1,240 in-lbs of max torque in an ultra compact design
 - Electronically controlled to optimize battery energy use for up to 50% longer run time per charge than BL1815
 - Eliminates carbon brushes, enabling the motor to run cooler and more efficiently for longer life
 - Efficiently uses energy to match torque and RPM to the changing demands of the application
- 18V Compact LXT® Li-Ion 2.0 AH Battery
- Features an integrated LED battery charge level indicator
 - Reaches full charge in 25 minutes or less
- Rapid Optimum Charger
- Communicates with the battery's built-in chip throughout the charging process to optimize battery life by actively controlling current, voltage and temperature
 - Built-in fan to cool the battery for faster, more efficient charging
- Includes: (1) 18V LXT® sub-compact brushless impact driver (Mi Item #07977328), (1) 18V LXT® Li-Ion compact 2.0Ah battery (Mi Item #07389196), (1) 18V LXT® Li-Ion rapid optimum charger (Mi Item #06082027), (1) tool case
- Manufacturer: Makita



Impact Wrench Kit

1/2" Square Drive

18V LXT®

- 3-speed power selection switch provides precise fastening control for a wide range of applications
 - Compact and ergonomic design at only 9" long
 - 1/2" anvil with friction ring for quick and easy socket changes
 - Rubberized soft grip handle provides increased comfort on the job
 - Built-in dual LED lights with preglow and afterglow illuminates the work area
 - Easy to operate forward/reverse switch
 - Electric brake for maximum productivity
 - Tool hook secures the tool when not in use
 - Equipped with Star Protection Computer Controls™ to protect against overloading, over-discharging and overheating
 - Compatible with Makita 18V Li-Ion batteries with a star symbol
 - BL™ Brushless Motor
 - Eliminates carbon brushes, enabling the motor to run cooler and more efficiently for longer life
 - Electronically controlled to optimize battery energy use for up to 50% longer run time per charge
 - Efficiently uses energy to match torque and RPM to the changing demands of the application
- 18V LXT® Li-Ion 5.0Ah Battery
- Features an integrated LED battery charge level indicator
 - Reaches a full charge in 45 minutes or less
- Rapid Optimum Charger
- Communicates with the battery's built-in chip throughout the charging process to optimize battery life by actively controlling current, voltage and temperature
 - Built-in fan to cool the battery for faster, more efficient charging
- Includes: (1) 18V LXT® brushless high torque 1/2" impact wrench (Mi Item #07507153), (2) 18V LXT® Li-Ion 5.0Ah battery (Mi Item #06900016), (1) 18V LXT® Li-Ion rapid optimum charger (Mi Item #06082027), (1) tool bag
- Manufacturer: Makita



WARNING: Cancer and Reproductive Harm
www.P65Warnings.ca.gov



WARNING: Cancer and Reproductive Harm
www.P65Warnings.ca.gov

Mi Item #	Mfr Part #	No Load Speed (RPM)	OAL
07962748	XDT15RB	0 to 1,300/0 to 3,000	5-5/16"

Mi Item #	Mfr Part #	No Load Speed (RPM)	OAL
07504610	XWT08T	0 to 900/0 to 1,000/ 0 to 1,800	9"



Cordless Metal Cutting Saw Kit

Brushless

18V LXT®

- Automatic Speed Change™ technology adjusts cutting speed and torque during cut for optimum performance
 - Large cutting capacity (2-1/4" at 90°) allows for 2" conduit to be cut in a single pass
 - Cuts a wide range of metals including Unistrut®, all thread, channel, conduit, pipe, sheet metal, square tubing, steel and more
 - Can be used with Makita 5-8" cutting blades
 - Soft grip handles provide increased comfort on the job
 - Electric brake for maximum productivity
 - Dual LED lights illuminate the work area
 - Stainless steel base reduces chip build-up to prevent surface damage
 - Compatible with Makita 18V Li-Ion batteries with a star symbol BL™ Brushless Motor
 - Eliminates carbon brushes, enabling the motor to run cooler and more efficiently for longer life
 - Electronically controlled to optimize battery energy use for up to 50% longer run time per charge
 - Efficiently uses energy to match torque and RPM to the changing demands of the application
- 18V LXT® Li-Ion Battery
- Features an integrated LED battery charge level indicator
 - Reaches a full charge in 45 minutes or less
- Rapid Optimum Charger
- Communicates with the battery's built-in chip throughout the charging process to optimize battery life by actively controlling current, voltage and temperature
 - Built-in fan to cool the battery for faster, more efficient charging
 - Includes: (1) 18V LXT® brushless 5-7/8" metal cutting saw, (2) 18V LXT® Li-Ion 5.0Ah battery (Mi Item #06900016), (1) 18V LXT® Li-Ion rapid optimum charger (Mi Item #06082027), (1) tool bag
 - Manufacturer: Makita



Cut-Off/Angle Grinder

High Power

SJS™

- SJS™ technology is a mechanical clutch system that helps prevent motor and gear damage by allowing the drive shaft to slip if the wheel is forced to stop
- Variable speed control dial enables user to match the speed of the application
- Constant speed control automatically applies additional power to the motor to maintain speed under load
- Soft start suppresses start-up reaction for smooth start-ups and longer gear life
- Electronic current limiter helps protect the motor from overload
- Labrynth construction seals and protects the motor and bearings from dust and debris for longer tool life
- Spiral bevel gears for smoother rotations and a more efficient transfer of energy
- Zig-zag varnish protects the armature coil from dust and debris for longer motor life
- Two position adjustable side handle for operator convenience
- Slide switch with lock-on setting for continuous use
- Includes: (1) 6" x 7/8" x 1/16" super thin cut-off wheel, (1) 6" cut-off wheel guard, (1) lock nut, (1) lock nut wrench, (1) inner flange, (1) side handle
- Manufacturer: Makita



WARNING: Cancer and Reproductive Harm
www.P65Warnings.ca.gov

Mi Item #	Mfr Part #	No Load Speed (RPM)	OAL
05406988	9566CV	4,000 to 10,000	11-3/4"



WARNING: Cancer and Reproductive Harm
www.P65Warnings.ca.gov

Mi Item #	Mfr Part #	No Load Speed (RPM)	OAL
07962751	XSC02T	3,900	13-1/8"

Some products may ship direct from the manufacturer.

Call. 800-526-9328 Click. MotionIndustries.com Visit. Over 550 Locations



Reciprocating Saw Kit

M18 FUEL™ Sawzall®

- Delivers the fastest cutting speed in its class, increased power and the durability of corded saws
- Includes: M18 FUEL™ SAWZALL® reciprocating saw (Mi Item #05810940), M18™ REDLITHIUM™ XC 5.0 extended capacity battery pack (Mi Item #06497769), M18™ and M12™ multi-voltage charger (Mi Item #05558603), blade, carrying case
- Manufacturer: Milwaukee Electric Tool



WARNING: Cancer and Reproductive Harm
www.P65Warnings.ca.gov

Mi Item #	Mfr Part #	SPM	Battery Packs Included
05657663	2720-22	0 to 3,000	2

1/4" Die Grinder Kit

M18 FUEL™

- Fits all 1/4" shank accessories
- 20,000 rpm brushless motor is designed to deliver corded performance while using carbide burrs, up to 3" flap wheels
- Includes: M18 FUEL™ 1/4" die grinder (Mi Item #07436973), (2) M18 REDLITHIUM™ XC5.0 extended capacity battery pack (Mi Item #06497769), M18™ and M12™ multi-voltage charger (Mi Item #05558603), (2) wrench, 1/4" collet
- Manufacturer: Milwaukee Electric Tool



WARNING: Cancer and Reproductive Harm
www.P65Warnings.ca.gov

Mi Item #	Mfr Part #	Description
07479524	2784-22	Kit

Grinder Kit

M18 FUEL™

- Same metal housing and gearing system as legendary high performance corded grinders
- 100% tool-free; make all accessory changes and guard adjustments without a wrench for increased productivity
- Includes: M18 FUEL™ 4-1/2"/5" grinder, paddle switch no-lock (Mi Item #05810941), M18™ REDLITHIUM™ XC 4.0 extended capacity battery pack (Mi Item #05561992), M18™ and M12™ multi-voltage charger (Mi Item #05558603), carrying case
- Manufacturer: Milwaukee Electric Tool



WARNING: Cancer and Reproductive Harm
www.P65Warnings.ca.gov

Mi Item #	Mfr Part #	Size	Speed (RPM)	Battery Packs Included
05657669	2780-22	4-1/2", 5"	8,500	2

Band Saw Kit

Deep Cut

M18 FUEL™

- CPT™ (Constant Power Technology) maintains cut speed in the toughest applications for optimal performance
- Jobsite Armor Technology™ proprietary composite material and crush zone barriers provides long-lasting rugged protection
- All metal direct drive delivers maximum tool life with all metal direct drive gearing system, while requiring less servicing than a chain drive
- Tool-free locking adjustable shoe gives you button actuated tool-free design allows user to quickly adjust from an extended shoe to no shoe in seconds
- LED light illuminates work surface for increased accuracy and productivity
- Includes: M18 FUEL™ Deep Cut Band Saw (Mi Item #06128831), M18™ REDLITHIUM™ XC 4.0 extended capacity battery pack (Mi Item #05561992), M18™ and M12™ multi-voltage charger (Mi Item #05558603), blade, carrying case
- Manufacturer: Milwaukee Electric Tool



WARNING: Cancer and Reproductive Harm
www.P65Warnings.ca.gov

Mi Item #	Mfr Part #	Capacity	SFPM
06063893	2729-21	5" x 5"	0 to 380



Grease Gun

Cordless

M18™

- Industry leading 10,000 PSI maximum operating pressure and maximum flow-rate of up to 10 ounce per minute
- Air bleeder valve for quick priming
- Lock-on / Lock-off trigger delivers added user convenience
- 48" flexible hose offers greater access to difficult to reach fittings

Kit 2646-21CT includes:

- Grease gun, (2) M18 compact REDLITHIUM batteries, M18/M12 multi-voltage charger, 48" flex hose with spring guard, high pressure grease coupler, hard carrying case with shoulder strap

Kit 2646-22CT includes:

- Grease gun, (2) M18 compact REDLITHIUM batteries, M18/M12 multi-voltage charger and carrying case
- Manufacturer: Milwaukee Electric Tool



WARNING: Cancer and Reproductive Harm
www.P65Warnings.ca.gov

Mi Item #	Mfr Part #	Description	PSI
Grease Gun Kits			
05572650	2646-22CT	Grease gun kit	10,000

MRO QUARTERLY - INDUSTRIAL SUPPLIES

Tower Light/Charger Kit

M18™ ROCKET™

- Can be setup in seconds to a max height of 7', and collapses to less than 4' for easy transport and storage
- Light head can be extended from 4' to 7' to light overhead work or minimize shadows when casting light downward
- Multidirectional light head gives users the ability to orient the three independently pivoting light heads to cast light in several directions
- With an integrated AC plug, a user can plug in the light with a standard extension cord, and charge any M18 REDLITHIUM™ pack
- Delivering 3,000 lumens, fills up large areas with TRUEVIEW™ high definition light
- High mode: 3,000 lumens for two plus hours
- Medium mode: 1,700 lumens for four plus hours
- Low mode: 900 lumens at eight hours with M18 REDLITHIUM™ XC5.0 battery pack (not included)
- Includes: M18 ROCKET™ tower light/charger (Mi Item #07358077), M18 REDLITHIUM™ HIGH DEMAND™ 9.0 battery pack (Mi Item #07224914), tower light carrying bag
- Manufacturer: Milwaukee Electric Tool



WARNING: Cancer and Reproductive Harm
www.P65Warnings.ca.gov

Mi Item #

07213392

Mfr Part #

2135-21HD



NOTHING BUT HEAVY DUTY™

COST SAVINGS SOLUTION OF THE QUARTER

CUT THE HOSE
Milwaukee FUEL™ Fastening Solutions
SAVE COST, INCREASE SAFETY, AND PROVIDE COMPATIBILITY
Compared to Pneumatic and Corded Tools

M18 FUEL™ ADVANTAGE

CORDED & PNEUMATIC COMMON USER FRUSTRATION		M18 FUEL
CORDS / HOSES	Restricted Mobility Safety Hazard Potential Work Surface Damage	✓ More Powerful than Pneumatic / Cordless & Corded Wrenches ✓ No Hoses / Cords ✓ Maintenance Free ✓ Reduced Noise Output ✓ M12™ / M18™ Multi-Voltage Charger
GENERATORS / COMPRESSORS	Routine Maintenance Load Noise Output	✓ Lower Cost of Ownership ✓ 5-Year Tool Warranty ✓ 3-Year (XC) Battery Warranty
TOOLS	Daily / Weekly Maintenance Load Noise Output Mobility Restricted by Hose Length	✓ Battery Pack is Compatible with OVER 150 M18™ TOOLS
COST (\$)	Overall Setup Cost (tools, compressor, hoses, fittings) Service Cost Fuel / Electric Cost to Operate Tools Average Warranty: 1-2 Years	
COMPATIBILITY	Different Tools Require Different Adaptor / Hose Sizes	

DID YOU KNOW MILWAUKEE HAS A FULL LINE OF IMPACT WRENCHES



M12 FUEL
INDUSTRY LEADER IN
IMPACT WRENCH SOLUTIONS

Industry
First 1" Cordless
Impact Wrench
2867-22 M Item # 08258325



M18 HIGH TORQUE IMPACT WRENCHES

MOST POWERFUL

UP TO
1800 FT-LBS
NUT-BUSTING
TORQUE

UP TO
7 LBS
LIGHTER
WEIGHT

ELIMINATES
COMPRESSORS &
GENERATORS

M18 FUEL™ High
Torque 1/2" Impact
Wrench w/ Pin
Detent Kit
2766-22 M Item # 07631403

M18 FUEL™
High Torque 1/2"
Impact Wrench w/
Friction Ring Kit
2767-22 M Item # 07548624

M18 FUEL™ 3/4"
High Torque Impact
Wrench Friction Ring
Kit w/ ONE-KEY™
2864-22 M Item # 07657393

Some products may ship direct from the manufacturer.

Call. 800-526-9328 Click. MotionIndustries.com Visit. Over 550 Locations

**MOTION®
INDUSTRIES**
Keeping Industry in Motion



Crimped Wire Internal Brush

1/8" Stem

Helituf™

- Heavily filled, rugged brushing tools suitable for use by hand or in power tools
- Should be used only with suitable holders and fully chucked
- Applications: Cleaning the entire inside circumference of a hole, cleaning out threaded areas, brushing edges of keyways and other recesses
- Brush length: 1"
- Overall length: 3-1/2"
- Manufacturer: Osborn International



WARNING: Cancer and Reproductive Harm
www.P65Warnings.ca.gov

Mi Item #	Mfr Part #	Dia	Fill Dia
03239494	36022	3/8"	0.0050"
03315218	36027	7/16"	0.0050"
03078264	36032	1/2"	0.0050"
03315220	36037	9/16"	0.0050"
03239496	36042	5/8"	0.0050"
03315222	36047	11/16"	0.0050"
03078265	36052	3/4"	0.0050"
03315224	36057	13/16"	0.0050"
03315225	36062	7/8"	0.0050"
03315227	36067	15/16"	0.0050"
03315228	36072	1"	0.0050"
03315229	36082	1-1/8"	0.0050"

Stringer Bead Brush 7"

- Features TufWire™ wire strands, which outperform competitive products in both material removal and longevity
- Patent pending knot design for the most aggressive cleaning action
- US made quality at an economical price
- Specially designed for the pipeline industry
- Fill diameter: 0.020"
- Manufacturer: Osborn International



WARNING: Cancer and Reproductive Harm
www.P65Warnings.ca.gov

Mi Item #	Mfr Part #	Trim Length	Arbor Hole	Max RPM
Stainless Steel				
08518468	26842	1-1/8"	5/8-11UNC	9,000
Steel				
08518228	26875	1-1/8"	5/8-11UNC	9,000

Small Grinder

High Speed—Stringer Bead

- Works aggressively, yet smoothly and efficiently on air tools or portable power tools
- Brush diameter: 4"
- Fill diameter: 0.020"
- Trim length: 7/8"
- Maximum RPM: 20,000
- Applications: Bead scale removal
- Manufacturer: Osborn International



WARNING: Cancer and Reproductive Harm
www.P65Warnings.ca.gov

Mi Item #	Mfr Part #	Threaded Arbor Hole	Nut Color
Stainless Steel Wire Fill			
03239478	26399	5/8-11NC	Steel
AB Carbon Wire Fill			
03078247	26369	5/8-11NC	Steel



IMPROVE THE BOTTOM LINE WITH OSBORN.

Osborn understands the importance of improved efficiency. That's why we have 1,250 experts ready to solve your toughest process challenges. Osborn offers unique solutions that save you time and money.



<https://tinyurl.com/y4yqn852>



Some products may ship direct from the manufacturer.

Call. 800-526-9328 Click. [MotionIndustries.com](https://www.motionindustries.com) Visit. Over 550 Locations



REELCRAFT

Spring Retractable Hose Heavy-Duty

- Reelcraft's new Series HD70000 hose reels are designed to accommodate up to 100 ft of 3/8 in ID hose or 75 ft of 1/2 ID hose.
- The heavy duty base design, all steel construction and a baked-on powder coat finish combine to produce a rugged, corrosion-resistant product.
- A newly redesigned latching mechanism provides longer service life of the latch components.
- Two sealed ball bearings produce a smoother spool rotation and easier operation.
- Compact design
- Reels are 25% smaller than our heavy duty Series 80000 reels.
- Guide rollers
- Reels are 25% smaller than our heavy duty Series 80000 reels
- The one-piece design and stainless steel pins offer greater strength and easier serviceability.
- Ease of operation
- The high quality, die cast aluminum hub and two sealed ball bearings produce a smoother spool rotation and easier operation.
- Quality finish and corrosion resistant.
- Individually powder coated components offer the maximum protection from premature corrosion
- Manufacturer: Reelcraft



WARNING: Cancer and Reproductive Harm
www.P65Warnings.ca.gov

Mi Item #	Mfr Part #	Hose ID	Hose Length	Hose Outlet (NPTM)	Reel Inlet (NPTF)
07186350	HD76050 OLP	3/8"	50'	1/4"	1/2"
07186352	HD76075 OLP	3/8"	75'	1/4"	1/2"
07186353	HD76100 OLP	3/8"	100'	1/4"	1/2"
07186354	HD78050 OLP	1/2"	50'	3/8"	1/2"



THE TEAM WITH THE RIGHT SOLUTION, RIGHT NOW.

We focus on value-added capabilities and services to support your needs, including:

- Heavy-Duty Belting
- Lightweight Belting
- Bulk Hose & Assemblies
- Gaskets
- Seals
- And Much More!



Call. 800-526-9328
Click. MiConveyanceSolutionsGroup.com
Visit. Over 550 Locations
f @ in p t y mi



Reelcraft Stocking Announcement



The below Reelcraft products will be at the following DISTRIBUTION CENTERS by July 15, 2019
Chicago, Dallas, Birmingham, Seattle, Baltimore and Tracy

General Industrial Spring Driven Reels - Series RT

Mi Item # 02894687 Reelcraft: RT650-OLP (3/8 X 50')

- The industrial-grade drive spring is protected in a polypropylene spool.
- Steel guide arm and base; guide arm adjusts to seven positions.
- Declutching arbor eliminates reverse spring winding and torsion style latch spring is virtually unbreakable.
- Available in medium and high pressure.



Premium Industrial Spring Driven Reels - Series 4000 / 5000 / 5005

Mi Item # 02894113 Reelcraft: 4435 OLP (1/4 X 35')

Mi Item # 03820456 Reelcraft: 4625 OLP (3/8 X 25')

Mi Item # 02614994 Reelcraft: 5650 OLP (3/8 X 50')

Mi Item # 02704930 Reelcraft: A5850 OLP (1/2 X 50')

- Latch cam is designed for reliable quiet operation.
- Steel components are powder coated for maximum corrosion resistance.
- Available in medium and high pressure.



Heavy Duty Industrial Spring Driven Reels - Series 7000 / HD70000

Mi Item # 07735374 Reelcraft: 7650 OLP (3/8 X 50')

Mi Item # 02686188 Reelcraft: 7670 OLP (3/8 X 70')

Mi Item # 07648910 Reelcraft: 7850 OLP (1/2 X 50')

Mi Item # 07186354 Reelcraft: HD78050 OLP (1/2 X 50')

Mi Item # 07186353 Reelcraft: HD76100 OLP (3/8 X 100')

Mi Item # 07186352 Reelcraft: HD76075 OLP (3/8 X 75')

Mi Item # 07186350 Reelcraft: HD76050 OLP (3/8 X 50')

- The steel guide arm and base are stamped with ribs and gussets to insure maximum strength. Guide arm adjusts to seven positions.
- Individually powder coated components offer the maximum protection from premature corrosion.



Heavy Duty Power and Light Cord Reels - Series L 4000

Mi Item # 02894621 Reelcraft: L 4545 123 3 (single outlet)

Mi Item # 06582829 Reelcraft: L 4545 123 9G (triple outlet, GFCI)

- A robust collector ring assures maximum conductivity current flow.
- Models shown are UL listed & CSA approved.
- For indoor, non-weather tight applications only.



Heavy Duty Pressure Washer Hose Reel - Series PW

Mi Item # 03811429 Reelcraft: PW7650 OHP

- The high pressure water swivel is designed to handle a broad range of pressures, temperatures and chemicals.
- Individually powder coated components offer the maximum protection from premature corrosion.



Tool Balancers - Series TB / TBL

Mi Item # 02894981 Reelcraft: TB 05

- Balances the weight of assembly tools, making them nearly weightless.
- Increases productivity by keeping tools positioned for immediate use with minimal operator motion.
- Reduces tool damage by preventing tools from being accidentally dropped.
- Reduces operator fatigue and improves safety and ergonomics.
- Safety tool clip and cable stop included.



Grounding Reel - Series G

Mi Item # 02894577 Reelcraft: G 3050

- Used to ground equipment operating in hazardous environments.
- Made from industrial carbon steel.
- Compact Design.
- Steel components are powder coated for superior corrosion resistance.
- Easily adjust spring tension by loosening two screws.



Replacement Parts

Description	Mi Item #	Reelcraft
1/4" Hose Bumper	01368328	1-HR1004-A
3/8" Hose Bumper	01368330	1-HR1004-3
3/8" Hose Bumper	01368329	1-HR1004
1/2" Hose Bumper	01368330	2-HR1004-3
3/4" Hose Bumper	01368332	3-HR1004-3
3/4" Hose Bumper	02868352	3-HR1005
1" Hose Bumper	02894117	4-HR1005
Bumper Stop Ass'y	02894001	3-HS1004-3
Latch Spring	02894746	S260067
Latch Spring	02894804	S400018
OD .630 .906 Hose Roller Guide	02894605	HR1145
OD .630 .906 Hose Roller Guide	02894603	HR1057
Swivel Assembly	02731413	S600886
1/2 X 50, 300 psi Hose Ass'y	06876258	S601022-50



Some products may ship direct from the manufacturer.

Call. 800-526-9328 Click. MotionIndustries.com Visit. Over 550 Locations



Wet Patch Rubberized

- Premium quality, heavily fibered, asphalt-based roof cement blended with penetrating oils and plasticizing agents
- Apply directly to cold, hot, wet, dry or underwater surfaces
- Repair and restore flashings and roofing defects such as blisters, cracks, and punctures
- Adhere new asphalt ply and modified bitumen membrane flashings or seal vents, shingles, skylights and chimneys
- Resists sags and spreads easily in cold conditions
- Excellent adhesion to cold, hot, wet, dry or underwater surfaces
- Immediate all-weather repairs
- Heavily fibered for increased durability and longevity
- Highly flexible to prevent cracking
- 10-year warranty
- Manufacturer: Rust-Oleum



WARNING: Cancer and Reproductive Harm
www.P65Warnings.ca.gov

Mi Item #	Mfr Part #	Container	Case Qty
07961846	301900	0.9 gal Can	4

Roof Sealant Silicone

- High solids, non-shrinking, moisture cure silicone sealant
- For sealing and repairing roofs, masonry, architectural metal, and metal roof seams and fasteners
- Solvent-free and minimal odor
- Seal penetrations and terminations
- Excellent adhesion to concrete, masonry, polyurethane foam, EPDM, aged PVC, aged acrylic coatings, granular cap sheet, wood, metals, Kynar® and most other common building materials
- May be applied to wet and underwater surfaces
- Manufacturer: Rust-Oleum



WARNING: Cancer and Reproductive Harm
www.P65Warnings.ca.gov

Mi Item #	Mfr Part #	Container	Case Qty
07962244	338772	10.1 oz Cartridge	12
07961847	338726	0.9 gal Can	4

Patching Fabric Universal

- Tietex T272 stitch bonded 100% polyester fabric
- For flashing, seams, cracks, small holes, blister repairs and more
- Compatible with acrylic, asphalt emulsion, asphalt- and solvent-base coatings, as well as with common roof cements, sealants and mastics
- Readily conforms to embedded gravel, irregular and smooth surface roof decks
- High strength properties with good elongation for excellent thermal stress force accommodations
- Manufacturer: Rust-Oleum



Mi Item #	Mfr Part #	Size (W x L)	Rolls per Case
07961849	301948	4" x 50' Roll	12

Primer

Water-Base

Zinsser® Bulls Eye 1-2-3®

- Water-base primer-sealer for interior and exterior use
- Sticks to all surfaces without sanding
- Seals stains, graffiti and tannin bleed
- Mold- and mildew-resistant film
- Rust inhibitive—great for new metal
- Fast one-hour dry time
- 35°F low application temperature
- Innovative Turbo Spray System™ delivers the same trusted protection of traditional Bulls Eye 1-2-3, but gets the job done four times faster
- Manufacturer: Rust-Oleum



WARNING: Cancer and Reproductive Harm
www.P65Warnings.ca.gov

Mi Item #	Mfr Part #	Container	Case Qty
05216015	2008	13 oz Aerosol	6
05089194	2001	1 gal Can	4
07961737	2000	5 gal Pail	1
Turbo Spray System			
08065442	343746	26 oz Aerosol	6



Ceiling Paint and Primer

Zinsser® Covers UP™

- Quick cure for water stains
- Ideal for common overhead stains
- Matches the color of most ceiling tiles
- Flat white finish will not yellow
- Low odor aerosol
- May be used as a primer or primer/finish
- Use under or over any latex or oil base paint
- Manufacturer: Rust-Oleum



WARNING: Cancer and Reproductive Harm
www.P65Warnings.ca.gov



Mi Item #	Mfr Part #	Container
05089195	3688	13 oz Aerosol

Roof Cement

Plastic

- Fibered, asphalt-based cement
- Strong, flexible seal resists cracking
- Applies fast and smooth without stringing
- Use on roofs, chimneys, skylights and flashing
- Install or repair roof flashings at valleys, parapet walls, gravel stops, stacks, vents, monitors and similar applications
- Seal cracks in exterior foundation and chimney walls
- Also use with fiberglass or polyester fabric or roll roofing for permanent repairs
- 3-year warranty
- Manufacturer: Rust-Oleum



WARNING: Cancer and Reproductive Harm
www.P65Warnings.ca.gov

Mi Item #	Mfr Part #	Container	Case Qty
07961840	301826	10.1 oz Cartridge	12

Primer

Oil-Base

Zinsser® Cover-Stain®

- Interior and exterior
- Exterior wood sealer blocks cedar and redwood bleed
- Seals water, smoke and nicotine stains
- Sticks to all surfaces without sanding
- Dries in one hour
- Manufacturer: Rust-Oleum



WARNING: Cancer and Reproductive Harm
www.P65Warnings.ca.gov



Mi Item #	Mfr Part #	Container	Case Qty
07961757	3608	13 oz Aerosol	6

Roof and Construction Sealant

High Performance

- Elastomeric sealant for sealing roofs, walls, trim, doors and windows
- Water-based sealant remains highly flexible to accommodate thermal stress movement without cracking
- Ideal for both residential and commercial applications
- Dries white and can be painted
- Highly flexible for long lasting protection
- Excellent adhesion to metal, vinyl, wood, tile, masonry, glass, and most roofing surfaces
- 10-year warranty
- Manufacturer: Rust-Oleum



Mi Item #	Mfr Part #	Container	Case Qty
07961838	301827	10.1 oz Cartridge	12

Some products may ship direct from the manufacturer.

Call. 800-526-9328 Click. MotionIndustries.com Visit. Over 550 Locations



Cleaner/Degreaser

Industrial All-Purpose Concentrate

- Concentrated, industrial-strength cleaner/degreaser for janitorial, MRO and more
- Easily cuts through tough grease, oils and built-up grime on all washable surfaces
- Safe for use in cleaning equipment such as floor scrubbers, dip tanks, carpet extractors, pressure washers, parts washers, steam extractors and foamers
- Orally non-toxic, readily biodegradable and VOC-compliant formula
- Non-flammable, non-abrasive and non-corrosive formula is butyl- and phosphate-free
- Deodorizes with original sassafras or invigorating lemon scent
- Manufacturer: Simple Green



WARNING: Cancer and Reproductive Harm
www.P65Warnings.ca.gov

Mi Item #	Mfr Part #	Container	Case Qty
Sassafras Scent			
02243808	2710001213012	24 oz Spray	12
02243805	2710200613005	1 gal Bottle	6
02243809	2710000213225	2.5 gal Bottle	2
02243806	2700000113006	5 gal Pail	1
02668606	2700000113016	15 gal Drum	1
02243807	2700000113008	55 gal Drum	1
03250674	2700000113275	275 gal Tote	1
Lemon Scent			
05070396	3010001214002	24 oz Spray	12
05870323	3010200614010	1 gal Bottle	6

Anti-Spatter

Ready-To-Use Protectant

- High-performance spatter release solution specially formulated for the welding industry
- Protects welding equipment and work surfaces from unwanted spatter
- Rinses residue free for use prior to plating or painting
- Non-flammable, non-corrosive, solvent and silicone free formula
- Reduces time-consuming spatter removal that can cause inconvenient and costly downtime
- No added color or scent
- Safe for aluminum, steel, painted and plated metals
- Readily biodegradable formula
- Manufacturer: Simple Green



WARNING: Cancer and Reproductive Harm
www.P65Warnings.ca.gov

Mi Item #	Mfr Part #	Container	Case Qty
05485353	1410001213452	32 oz Spray Bottle	12
05485354	1410000413454	1 gal Bottle	4
05485355	1400000113457	5 gal Pail	1
05485356	1400000113467	55 gal Drum	1

THE MOST COMPLETE SOURCE FOR INDUSTRIAL NEWS & INFORMATION.

NEWS | VIDEOS | WHITEPAPERS | RESOURCES



EXPERT TIPS

Enhance your knowledge with ongoing advice from the Industrial Specialists at Motion Industries.



VALUABLE RESOURCES

Unlimited access to articles, videos, whitepapers and more.



NEWS & LATEST TRENDS

Find relevant content about industrial supplies.



Visit us online at
MiIndustrialSpecialist.com



Call. 800-526-9328
 Click. MotionIndustries.com
 Visit. Over 550 Locations



Some products may ship direct from the manufacturer.

Call. 800-526-9328 Click. MotionIndustries.com Visit. Over 550 Locations



Disinfectant

One-Step

Simple Green® d Pro 5

- Blood borne pathogen compliant
- Kills HIV-1, Hepatitis B and C, SARS, staph, MRSA, Pox Virus, Salmonella, E. Coli, norovirus, influenza, athlete's foot fungus and more
- One-step disinfectant, virucide, fungicide, mildewstat, cleaner and sanitizer
- No added fragrance
- EPA registered, hospital-grade formula
- Listed on EPA's "List L" disinfectants for use against the Ebola virus
- Manufacturer: Simple Green



WARNING: Cancer and Reproductive Harm
www.P65Warnings.ca.gov

Mi Item #	Mfr Part #	Container	Case Qty
03184055	3410000430501	1 gal Bottle	4
03184056	3400000130505	5 gal Jug	1
03184057	3400000130555	55 gal Drum	1

Flow Proportioner

Accumax

- Easy-to-use, single button units dispense 1 chemical at 1 dilution rate
- 14 pre-set metering tips, 1 customizable tip for non-standard dilutions
- Option to lock in the "on" position
- Easy, tool-free maintenance
- American Society of Safety Engineers (ASSE) 1055 approved
- Includes: Metering tips, 4' bottle fill hose, storage hook
- Manufacturer: Simple Green



WARNING: Cancer and Reproductive Harm
www.P65Warnings.ca.gov

Mi Item #	Mfr Part #	Flow	Pre-Set Tips
07671934	0800000108950	Low	1:4 to 1:128
07671933	0800000108949	High	1:4 to 1:447
07671932	0800000109019	Low	2:6:1 to 128:1

Aircraft and Precision Cleaner

Non-Corrosive Formula

Extreme Simple Green®

- Combined power of high soil capacity, superior grease cutting and clean rinsing ensures fast, effective and high-precision cleaning
- Non-corrosive formula is safe for use on aluminum, carbon fiber, high tech alloys, structural metals, paints, protective coatings and more
- No reagents oxidize finishes, cause rust within the fluid or degrade plastics
- Clean aircraft, equipment, engines, vehicles, manufactured parts and more
- Use manually or with cleaning equipment such as floor scrubbers, dip tanks, carpet extractors, pressure washers, parts washers, rack systems and foamers
- Safe for entrance into oil/water separators and clarifiers
- VOC-compliant and biodegradable formula
- Manufacturer: Simple Green



WARNING: Cancer and Reproductive Harm
www.P65Warnings.ca.gov

Mi Item #	Mfr Part #	Container	Case Qty
03068658	0110001213412	32 oz Spray Bottle	12
03068657	0110000413406	1 gal Bottle	4
03184052	0100000113405	5 gal Pail	1
03068659	0100000113455	55 gal Drum	1
07340835	0100000113475	275 gal Tote	1

Some products may ship direct from the manufacturer.

Call. 800-526-9328 Click. MotionIndustries.com Visit. Over 550 Locations



Socket Rail & Stud Set

- Lightweight, anodized aluminum rails provide durability without sacrificing added weight
- 360-degree rotating studs allow for perfect positioning on sockets for maximum visibility of the size markings
- Includes socket studs featuring metal ball detent for strong hold on sockets
- Manufacturer: Proto



WARNING: Cancer and Reproductive Harm
www.P65Warnings.ca.gov

Mi Item #	Mfr Part #	Drive Size	Number of Studs
08775816	J2501RS	1/4"	8
08775817	J2502RS	1/4"	11
08775818	J2503RS	3/8"	7
08775819	J2504RS	3/8"	13
08775820	J2505RS	1/2"	8
08775821	J2522RS	1/2"	12

Socket Rail

- Lightweight, anodized aluminum rails provide durability without sacrificing added weight
- Customize with socket studs and rail magnets for optimal socket organization
- Stud and magnet packs sold separately
- Manufacturer: Proto



WARNING: Cancer and Reproductive Harm
www.P65Warnings.ca.gov

Mi Item #	Mfr Part #	Drive Size	Overall Length
08775822	J2506R	1/4" and 3/8"	6"
08775823	J2507R	1/4" and 3/8"	9"
08775824	J2508R	1/2"	9"
08775825	J2509R	3/8"	13"
08775826	J25010R	1/2"	13"
08775827	J25011R	1/2"	17"

Socket Stud Pack

- 360-degree rotating studs allow for perfect positioning of sockets for maximum visibility of the size markings
- Socket studs feature metal ball detent for a strong hold on sockets
- Pair with socket rails for custom organization
- Socket Rails sold separately
- Manufacturer: Proto



WARNING: Cancer and Reproductive Harm
www.P65Warnings.ca.gov

Mi Item #	Mfr Part #	Drive Size	Number of Studs
09177895	J2512S	1/4"	5
08775829	J2515S	1/4"	10
08775830	J2513S	3/8"	5
08775831	J2516S	3/8"	10
08775832	J2514S	1/2"	5
08775832	J2517S	1/2"	10

Stud Rail Tray Set

- Lightweight, anodized aluminum rails provide durability without sacrificing added weight
- Overall length: 14"
- Manufacturer: Proto



WARNING: Cancer and Reproductive Harm
www.P65Warnings.ca.gov

Mi Item #	Mfr Part #	Drive Size	Number of Studs
08775834	J2518TS	3/8"	20
08775835	J2519TS	1/2"	20

Magnetic Kit For Socket Rails

- Allows users to customize number of sockets stored on the rail and maximize storage space
- Includes magnets, rail locks and non-marring pads to maintain magnet placement
- Manufacturer: Proto



WARNING: Cancer and Reproductive Harm
www.P65Warnings.ca.gov

Mi Item #	Mfr Part #	Drive Size
08775836	J2520MAG	1/2"
08775837	J2521MAG	1/4" and 3/8" 1/2"



ADVANCED HEX BIT SOCKETS

BENEFITS

Rounded Bolt Removal Technology (RBRT™) designed to prevent the rounding of hex fasteners.

- ▶ Anti-slip dual-directional hex driver is effective at removing compromised hex fasteners.
- ▶ S2 tool steel bits are precision machined for use on standard or compromised hex fasteners.
- ▶ Bi-directional: works for both loosening and tightening hex fasteners.
- ▶ Meets or exceeds ANSI specifications.



J5441R-12M

J4990R-1/4

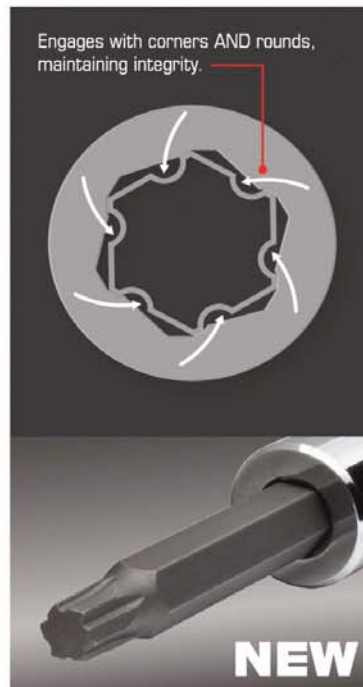
Torx® is a trademark of Acument Intellectual Properties, LLC

««« NEW »»»

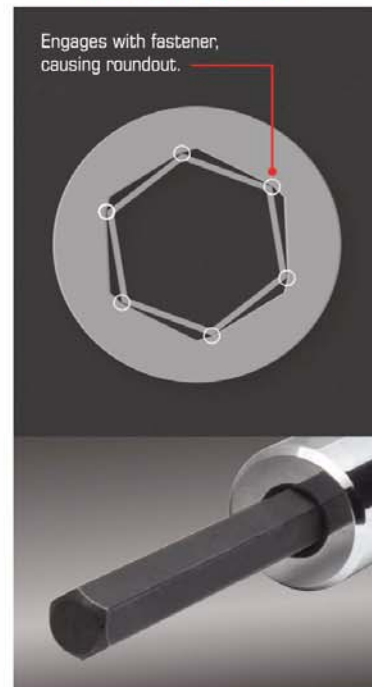
NEW ADVANCED HEX BIT SOCKETS

VS.

STANDARD HEX BIT SOCKET



Advanced Hex Bit Sockets engage both the rounds and corners of the fasteners pulling them inward to help maintain the integrity of fastener.



Standard Hex and Torx® tools grip the rounds of fasteners stretching the material when torque is applied, eventually rounding the fasteners out.



Some products may ship direct from the manufacturer.

Call. 800-526-9328 Click. MotionIndustries.com Visit. Over 550 Locations



Penetrant Rust Release

Blu Torch™ Technology

- Contains proprietary Blu-Torch™ technology to penetrate quickly
- Leaves a protective layer to prevent rust and corrosion
- Safe on plastics, rubber and metal
- 50 state VOC-compliant
- Manufacturer: WD-40



WARNING: Cancer and Reproductive Harm
www.P65Warnings.ca.gov



Mi Item #	Mfr Part #	Container	Pkg Qty
05351008	300004	11 oz Aerosol	6

Cleaner and Degreaser Industrial Strength Specialist™

- Anti-corrosive additives prevent flash rust
- Will not harm sensitive metal surfaces such as copper, aluminum and chrome
- Safer choice certified
- Non-flammable and low odor
- Manufacturer: WD-40



WARNING: Cancer and Reproductive Harm
www.P65Warnings.ca.gov



Mi Item #	Mfr Part #	Container	Case Qty
07445863	300349	24 oz Refillable Spray	6
07445868	300356	32 oz Trigger Spray	6
07445865	300363	1 gal Bottle	4

Gel Lubricant Spray and Stay Specialist™

- Long-lasting lubrication that will not run, drip or make a mess
- No-fling makes it excellent for chains and cables
- Prevents rust for up to one year
- Manufacturer: WD-40



WARNING: Cancer and Reproductive Harm
www.P65Warnings.ca.gov



Mi Item #	Mfr Part #	Container	Pkg Qty
06885285	300103	10 oz	6

Extreme Pressure Grease Heavy-Duty Specialist™

- Extreme pressure lubrication
- Outstanding surface protection against heavy load and wear
- Excellent corrosion protection
- Manufacturer: WD-40



WARNING: Cancer and Reproductive Harm
www.P65Warnings.ca.gov



Mi Item #	Mfr Part #	Container	Pkg Qty
07355295	300400	14 oz Cartridge	10



**YOU SPRAY
IT STAYS**

**No-Drip No-Mess Lubrication
Prevents Rust for Up to One Year***

*Independent testing conducted in salt spray and humidity chamber testing.
Results may vary depending on extreme conditions



WD-40® Specialist®
Spray & Stay Gel 10oz
Mi Item # 06885285

Safe for Use on Multiple Surfaces

**Safe for Use in Food Processing
Facilities**

**Non-Flammable, Non-Corrosive,
Non-Abrasive**

**Cleans Greasy Parts, Tools, Shop
Floors, Industrial Machinery,
Commercial Appliances and Equipment**

**WD-40® Specialist® Industrial-Strength
Cleaner & Degreaser**

32oz Trigger
Mi Item # 07445868

1 Gallon Bottle
Mi Item # 07445865

24oz Refillable
Mi Item # 07445863



55 Gallon Drum
Mi Item # 07445871

**Penetrates Deep to Break the Bonds
That Hold Stuck Parts Together**

**Leaves Behind a Protective Layer
to Help Prevent Rust and Corrosion
from Re-Forming**

**Safe for use on Plastics, Rubber
and Metal**

WD-40® Specialist®
Rust Release
Penetrant 11oz
Mi Item # 05351008



**Breaks up Hard Carbon
Deposits Instantly**

**Blasts Away Deposits
and Leaves No Residue**

WD-40® Specialist®
Carb & Throttle Body
and Parts Cleaner 13.5oz
Mi Item # 07516683



Some products may ship direct from the manufacturer.

Call. 800-526-9328 Click. MotionIndustries.com Visit. Over 550 Locations



Drum Handler

Ergonomic

- Handles most 30, 55, or 85 gal drums, in steel, fiber and poly
- Works with most drums with locking rings
- Lifts, transports, weighs and places drums on spill or standard pallets
- Spring-loaded jaws hold any 3/16" or higher drum rim
- Operator does not need to touch drums to operate
- Patented Gator Grip® drum clamp will not drop a drum if operated properly
- Legs retracted capacity: 650 lbs
- Legs extended capacity: 1,100 lbs
- (2) wheels and (2) swivel casters, 5" x 2" phenolic, and floor lock
- Manufacturer: Wesco



WARNING: Cancer and Reproductive Harm
www.P65Warnings.ca.gov

Mi Item #	Mfr Part #	Model #	Capacity (lbs)
02539097	240150	DM-1100	650/1,100

CPI Pallet Truck

- 4 mm thick forks
- Adjustable fork connecting rods
- Overload bypass
- Rubber coated handle
- 7" moldon polyurethane steering wheels
- 3" moldon polyurethane load wheels
- Entry and exit rollers
- 8 gauge, 6" wide forks
- 210° steering
- Manufacturer: Wesco



WARNING: Cancer and Reproductive Harm
www.P65Warnings.ca.gov

Mi Item #	Mfr Part #	Capacity (lbs)	Fork Dimensions (W x L)
02539484	272660	5,500	27" x 48"

Pallet Leveler

- Progressively lowers as pallet is loaded and raises as pallet is unloaded
- Three heavy-duty calibrated springs used in combination according to desired load range
- Bearing supported carousel for easy turning
- Built in fork pockets for ease of transport
- Helps reduce fatigue and injury from bending and lifting
- Manufacturer: Wesco



WARNING: Cancer and Reproductive Harm
www.P65Warnings.ca.gov

Mi Item #	Mfr Part #	Capacity (lbs)	Fork Pocket Size (W x L)
05356397	272986	400 to 4,500	5.75" x 39"

Hydraulic Pedalift

- Foot operated hydraulic pump raises platform, foot release lowers platform
- Wheel lock standard
- All 54" lifts are 60.5" O.A.H.
- All 40" lifts are 48.5" O.A.H.
- (2) 8" x 2" wheels with 0.75" precision ball bearings
- Adjustable forks
- Overall Width: 22.5"
- Overall Height: 60.5"
- Capacity: 750 lbs
- Model 260009 contains (2) 3.5" diameter polyurethane ball bearing front swivel casters
- Manufacturer: Wesco



WARNING: Cancer and Reproductive Harm
www.P65Warnings.ca.gov

Mi Item #	Mfr Part #	Model
Four-Wheeled		
02539119	260009	DPL-54-2222
Two-Wheeled		
02539112	260002	PL-54-2222



Drum Handler

Ergonomic—High Reach

- Handles most 30, 55 or 85 gal drums in steel, fiber and poly
- Works with most drums with locking rings
- Up/down remove on power units
- Power drive travel speed 120'/min
- Lifts, transports, weighs, and places drums on spill or standard pallets
- Spring-loaded jaws hold any 3/16" or higher drum rate
- Operator does not need to touch drums to operate
- Patented Gator Grip® drum clamp will not drop a drum if operated properly
- Legs retracted capacity: 650 lbs
- Legs extended capacity: 1,100 lbs
- (2) wheels and (2) swivel casters, 5" x 2" phenolic, and floor lock
- Manufacturer: Wesco



WARNING: Cancer and Reproductive Harm
www.P65Warnings.ca.gov

Mi Item #	Mfr Part #	Model #
06112747	240154	DM-1100-HR

Drum Handler

Ergonomic—Power Lift

- Handles most 30, 55, or 85 gal drums in steel, fiber or poly
- Works with most drums with locking rings
- Up/down remote on power units
- Power drive travel speed 120'/min
- Lifts, transports, weighs and places drums on spill or standard pallets
- Spring-loaded jaws hold any 3/16" or higher drum rim
- Operator does not need to touch drums to operate
- Patented Gator Grip® drum clamp will not drop a drum if operated properly
- (2) wheels and (2) swivel casters, 5" x 2" phenolic, and floor lock
- Legs retracted capacity: 650 lbs
- Legs extended capacity: 1,100 lbs
- Manufacturer: Wesco



WARNING: Cancer and Reproductive Harm
www.P65Warnings.ca.gov

Mi Item #	Mfr Part #	Model #
06112758	240156	DM-1100-PL

Fork Model Truck

Deluxe Adjustable

- Pump overload bypass
- Rubber coated handle
- 200° steering
- Tapered fork tips
- Adjustable fork tie rods
- Exit rollers
- 8 gauge 6" wide reinforced forks
- 7" non-marking molden polyurethane steering wheel
- 3" non-marking molden polyurethane load wheels
- Manufacturer: Wesco



WARNING: Cancer and Reproductive Harm
www.P65Warnings.ca.gov

Mi Item #	Mfr Part #	Capacity (lbs)	Fork Dimensions (W x L)
02901963	272744	5,500	21" to 27" x 48"

Fork Stacker

- 1" thick x 3" wide x 25" long forks
- Adjustable span up to 25"
- 15" load center
- 25.5" overall width, 40" depth
- Forks lower to ground
- Manufacturer: Wesco



WARNING: Cancer and Reproductive Harm
www.P65Warnings.ca.gov

Mi Item #	Mfr Part #	Model	Capacity (lbs)
02539142	260037	SFL-76-25	1,000

Some products may ship direct from the manufacturer.

Call. 800-526-9328 Click. MotionIndustries.com Visit. Over 550 Locations



Hand Cleaner

Heavy-Duty

TKO®

- Professional strength non-solvent hand cleaner with heavy-duty detergents offers powerful cleaning
- Fortified with tough scrubbing pumice to remove ground-in dirt and grease
- Enriched with lanolin that moisturizes and soothes hands
- Pleasant lemon lime fragrance
- Manufacturer: Zep



WARNING: Cancer and Reproductive Harm
www.P65Warnings.ca.gov

Mi Item #	Mfr Part #	Container	Case Qty
07528207	R54824	1 gal Jug	4

Hand Cleaner Towel

Heavy-Duty

Cherry Bomb®

- Removes stubborn industrial soils such as grease, tar, carbon, asphalt, inks, resins, paints and adhesives
- Abrasive towel scrubs hands to remove ground-in dirt and grease
- Mild cherry scent and low odor solvent formula penetrate and effectively overcome residual odors of diesel and other fuels on hands
- Enriched with emollients to protect the hands by replacing skin oils and preventing dryness
- Applications: Automotive repair facilities, car washes, maintenance shops, tool and machine shops, truck and equipment repair facilities, construction areas, oil and gas fields, print shops
- Manufacturer: Zep



WARNING: Cancer and Reproductive Harm
www.P65Warnings.ca.gov

Mi Item #	Mfr Part #	Color	Container	Case Qty
06750808	346601	Red	130 Towels	4

Cleaner/Degreaser

Extra Heavy-Duty

Morado Super Cleaner

- Concentrated, alkaline cleaner and degreaser that quickly removes a wide variety of greasy and carbonaceous soils not readily penetrated by ordinary cleaning products
- Contains no phosphates and all biodegradable detergents
- Applications: Extra heavy-duty industrial cleaning, including carbon, soot, ink and grease removal
- Cleans industrial concrete floors and other masonry surfaces, greasy engines and equipment
- Perfect for airport terminals, bus terminals, recreational clubs, automotive repair shops, car washes, cleaning and maintenance services, commercial printers, schools and manufacturing facilities
- Apply with a mop, brush, low-pressure spray or automatic scrubbing machine; effective at high-dilution ratios
- Manufacturer: Zep



WARNING: Cancer and Reproductive Harm
www.P65Warnings.ca.gov

Mi Item #	Mfr Part #	Container	Case Qty
07688690	85624	1 gal Bottle	4
06746532	85635	5 gal Pail	1
07688691	85650	20 gal Drum	1
07001309	85685	55 gal Drum	1
07688692	85689	275 gal Tote	1

Penetrant/Lubricant

Dual-Action

Zep 45® Dual Force

- Quickly penetrates to dramatically reduce friction and wear while offering excellent corrosion resistance and rapid moisture displacement
- Prolongs working life of machinery and reduces downtime and maintenance costs
- Lubricates and protects most equipment
- Ideal for automatic vending machines, building materials dealers, repair services, hotels, motels, metal fabricators, and recreation clubs
- At a VOC content in the tenths of 1% range, the product meets all current VOC regulations
- Dual spray pattern (fan mist and pinpoint)
- Manufacturer: Zep



WARNING: Cancer and Reproductive Harm
www.P65Warnings.ca.gov

Mi Item #	Mfr Part #	Container	Case Qty
06135661	374301	14 oz Aerosol	12



Concrete Floor & General Purpose Cleaner

Heavy-Duty

Formula 22

- Low foaming heavy-duty cleaner and degreaser for unfinished floors such as concrete, ceramic tile and terrazzo
- Can be used as a general-purpose cleaner at lower dilutions
- Contains inhibitors to protect against degrading soft metals such as aluminum
- Rinses easily and produces a film-free surface
- Works equally well in either hard or soft water
- Can be used in auto-scrubbers
- Refreshing citrus scent
- Contains only biodegradable detergents and emulsifiers
- For use as a floor and wall cleaner in all departments
- Manufacturer: Zep



WARNING: Cancer and Reproductive Harm
www.P65Warnings.ca.gov

Mi Item #	Mfr Part #	Container	Case Qty
07109679	67835	5 gal Pail	1
07688675	67850	20 gal Drum	1
05539881	67885	55 gal Drum	1

Cleaner/Degreaser

Formula 50™

- Rapidly removes dirt, grease and grime from a wide variety of surfaces
- Dissolves and removes food grease and many industrial oils and greases
- Can be used as a general-purpose cleaner, floor cleaner, wax and floor finish stripper, engine degreaser and for a variety of other cleaning challenges
- May be used by hand or through steam or pressure cleaning equipment, automatic scrubbers, etc.
- Will not harm metal surfaces, including aluminum, when used as directed on the label
- All detergents and wetting agents are completely biodegradable
- Formulation does not contain petroleum or chlorinated solvents, excess caustic, or phosphates, and it is non-toxic by ingestion
- Manufacturer: Zep



WARNING: Cancer and Reproductive Harm
www.P65Warnings.ca.gov

Mi Item #	Mfr Part #	Container	Case Qty
05423281	85924	1 gal Jug	4
05423320	85935	5 gal Pail	1
07571195	85950	20 gal Drum	1
07688693	85985	55 gal Drum	1
07688694	85989	275 gal Tote	1

Some products may ship direct from the manufacturer.

Call. 800-526-9328 Click. MotionIndustries.com Visit. Over 550 Locations



Safety Cabinet

Flammables

Sure-Grip® EX

- U-LOC™ handle allows for optional padlock (not included) for extra security
- SpillSlope® shelves direct spills to back and bottom of cabinets and adjust in 3" increments
- Fail-safe three-point stainless steel bullet latch system provides easy, positive door closure
- 18-gauge double-walled steel with 1-1/2" of insulation air space for fire resistance
- Haz-Alert™ reflective labeling-hazard warning in three languages
- Complies with OSHA and NFPA, FM approved on 12-, 30-, 45-, 60- and 90-gallon sizes
- Made in the USA
- 10-year warranty
- Manufacturer: Justrite Manufacturing



WARNING: Cancer and Reproductive Harm
www.P65Warnings.ca.gov

Mi Item #	Mfr Part #	Door Style	Capacity	Dimensions (H x W x D)
Mini				
05872531	890200	Manual Close	Aerosols	22" x 17" x 8"
Benchtop				
04310078	890500	Manual Close	24 Cans	27" x 21" x 18"
Countertop				
04051353	890400	Manual Close	4 gal	22" x 17" x 17"
04386882	890420	Self Close	4 gal	22" x 17" x 17"
Compact				
04475059	891200	Manual Close	12 gal	35" x 23-1/4" x 18"
05427302	891220	Self Close	12 gal	35" x 23-1/4" x 18"
Floor Type, Two Door				
03497970	893000	Manual Close	30 gal	44" x 43" x 18"
04870247	893020	Self Close	30 gal	44" x 43" x 18"
03721269	894500	Manual Close	45 gal	65" x 43" x 18"
04220547	894520	Self Close	45 gal	65" x 43" x 18"
03657857	896000	Manual Close	60 gal	65" x 34" x 34"
05412735	896020	Self Close	60 gal	65" x 34" x 34"
04208283	899000	Manual Close	90 gal	65" x 43" x 34"
04549830	899020	Self Close	90 gal	65" x 43" x 34"

Safety Can

Type II with Metal Hose

AccuFlow™

- Provides fast, precision pouring when handling flammable liquids
- 9" flexible metal hose ensures targeted pouring into small openings
- Long-lasting, stainless steel flame arrester dissipates heat to prevent flashback ignition
- Gasketed, self-closing leak-tight lid automatically vents to guard against rupture or explosion
- Meets OSHA and NFPA, FM approved, UL/ULC listed, CARB compliant, TUV certified
- Colors are suitable for the storage of liquids: Yellow for diesel, red for flammables
- Manufacturer: Justrite Manufacturing



WARNING: Cancer and Reproductive Harm
www.P65Warnings.ca.gov

Mi Item #	Mfr Part #	Capacity (Gal)	Hose Dia	Color
04315917	7250120	5	5/8"	Red
06198801	7250130	5	1"	Red
04315921	7250230	5	1"	Yellow

Cigarette Butt Receptacle

Smokers Cease-Fire

- Safe and attractive
- Innovative self-extinguishing design safely collects unsightly cigarette butts and reduces the risk of fire
- Flame-retardant, sturdy polyethylene will not rust, dent or crack
- Unique rain bonnet opening keeps rain out and discourages other trash
- Simply lift off lid to empty big galvanized steel pail inside
- Tie-down notches offer security and greater stability under severe weather conditions
- Unique "trip-lip" internal construction prevents tar condensation from escaping in high humidity
- Factory mutual fire-tested and approved
- Size: 4 gallons
- Manufacturer: Justrite Manufacturing



WARNING: Cancer and Reproductive Harm
www.P65Warnings.ca.gov

Mi Item #	Mfr Part #	Color
02441255	26800	Pewter Gray
02441256	26800B	Adobe Beige
02441257	26800D	Deco Black



Cylinder Barricade Rack

Gas

- Secure cylinders up to 12" diameter
- Meets USGS high-hazard seismic zone requirements when properly mounted
- Manufacturer: Justrite Manufacturing



WARNING: Cancer and Reproductive Harm
www.P65Warnings.ca.gov

Mi Item #	Mfr Part #	Cylinders	Size (W x D x H)
07732032	35080	1 (1W x 1D)	16" x 16" x 30"
07732033	35084	2 (1W x 2D)	16" x 26" x 30"
07732036	35100	2 (2W x 1D)	30" x 16" x 30"
07732037	35106	4 (2W x 2D)	30" x 26" x 30"
07732038	35112	6 (2W x 3D)	30" x 38" x 30"
07732039	35118	8 (2W x 4D)	30" x 50" x 30"
07732045	35150	8 (4W x 2D)	58" x 26" x 30"
07732047	35162	16 (4W x 4D)	58" x 50" x 30"

Cigarette Butt Can

Heavy-Duty

- Self-extinguishing design can be positioned easily near entryways to encourage proper cigarette disposal
- Fire-safe galvanized steel two-piece base with neck features a tough powder-coat finish to resist rust
- Polyethylene top keeps rain out
- Easy-to-empty by untwisting compression nut where neck meets the base
- Perfect for outdoor industrial setting such as factories, backdoor entrances, alleyways, loading docks, and service and repair shops
- Manufacturer: Justrite Manufacturing



WARNING: Cancer and Reproductive Harm
www.P65Warnings.ca.gov

Mi Item #	Mfr Part #	Color
06079434	26811R	Safety Red

Safety Drum Funnel

with Flame Arrester

- Wide-mouth opening with hinged, stay-open lid
- Built-in flame arrester to prevent fire intrusion
- Galvanized steel with durable epoxy powder coat finish
- FM approved and comply with EPA and OSHA regulations
- Manufacturer: Justrite Manufacturing



WARNING: Cancer and Reproductive Harm
www.P65Warnings.ca.gov

Mi Item #	Mfr Part #	Cover	Color	Size (Dia x H)	Flame Arrester	Bung
Large Steel Funnel for 30- or 55-Gal Drum						
02441276	08207	Self-closing	Red	10.75" x 10"	6"	2"

Some products may ship direct from the manufacturer.

Call. 800-526-9328 Click. MotionIndustries.com Visit. Over 550 Locations



Roof Leak Diverter Kit

Bucket Style with Absorbents

PIG®

- Perfect for grab-and-go response to overhead leaks
- Contains everything you need to catch leaks and channel them to the included pail or a floor drain
- Non-permeable tarp is vinyl-coated for strength and durability; resists punctures, UV and mildew for long life
- Pre-installed quick connect set lets you attach hose to leak diverter in seconds
- Manufacturer: New Pig



WARNING: Cancer and Reproductive Harm
www.P65Warnings.ca.gov

Mi Item #	Mfr Part #	Size (W x L)	Color
03042093	TLS668-TR	7' x 7'	Transparent

NEW PIG

Roof Leak Diverter

PIG®

- The original leak diverter, invented by PIG® and engineered to stop devastating roof leak damage every time, guaranteed
- Hangs easily in problem spots to catch nuisance leaks and channel them to a floor drain or collection container
- Ideal for quick response to avoid downtime after a roof leak or for long-term prevention in leak-prone areas
- Manufacturer: New Pig



WARNING: Cancer and Reproductive Harm
www.P65Warnings.ca.gov

Mi Item #	Mfr Part #	Size (W x L)	Color
03043303	TLS464-TR	10' x 10'	Transparent

Absorbent Sock

PIG® Blue

- Heaviest sock from PIG® features extra-dense construction to hug floors and stay in place while containing spills
- Fine-grade vermiculite filler quickly absorbs leaks, drips and spills; great for spill response or absorbing machine leaks
- Stitch-bonded, polypropylene skin resists bursting; reduces dust and holds in liquid, even when saturated
- Ideal for diking and damming liquids
- Priced per box
- Manufacturer: New Pig



WARNING: Cancer and Reproductive Harm
www.P65Warnings.ca.gov

Mi Item #	Mfr Part #	Size (Dia x L)	Absorbency	Pkg Qty
02422157	4048	3" x 4'	30 gal/Box	40

Absorbent Floor Mat

PIG® Grippy®

- Adhesive-backed floor mat stays exactly where you put it with no shifting, bunching up or flipping over
- Proprietary adhesive sticks to the floor with a super-tight grip, but peels up easily
- Extreme durability stands up to heavy traffic, even forklifts, to keep it on the job for up to 12 weeks
- Easy to use, customize and clean; you can sweep, vacuum, mop, use your shop/wet vac or run your floor scrubber over Grippy® Mat and it will not budge
- Thinnest commercial floor mat you can buy; ADA-compliant for wheelchairs and walkers
- Completely eliminates rental mat hassles and can save up to 50% per year over rental contracts
- Tested and certified by the National Floor Safety Institute (NFSI): when used as part of your floor safety program, high-traction surfaces such as PIG® Grippy Floor Mat have been proven to reduce slip-and-fall claims by as much as 90%
- Manufacturer: New Pig



WARNING: Cancer and Reproductive Harm
www.P65Warnings.ca.gov

Mi Item #	Mfr Part #	Size (W x L)	Absorbency	Color
06547107	GRP36200-BK	36" x 100'	8 gal	Black



New Pig

Universal Mat Pad

PIG®

- Lasts two times longer than ordinary mats for fewer change-outs, absorbs everything, works everywhere
- Eight layers of 100% polypropylene are thermally bonded to make PIG® Mat the strongest mat on the market; will not rip, tear or fray, even when saturated
- Absorbs most common industrial liquids, such as oils, water, solvents, coolants and more
- Easy-tear perforations let you take only what you need so you use less mat and save money
- Choose pads for catching drips and spill response or rolls for covering large areas
- Dispenser box makes it easy to take, carry and store your mat while protecting it from dirt and moisture
- Manufacturer: New Pig



WARNING: Cancer and Reproductive Harm
www.P65Warnings.ca.gov

Mi Item #	Mfr Part #	Size (W x L)	Absorbency	Packaging
Heavyweight				
02368033	MAT203	15" x 20" Pad	22 gal	100 Pads/Bag
02394014	MAT240	15" x 20" Pad	22 gal	100 Pads/Dispenser Box
02422357	MAT202-01	24" x 150'	32.4 gal	1 Roll
01305083	MAT230	30" x 150' Roll	40.2 gal	1 Roll
Mediumweight				
02311450	MAT411	30" x 200' Roll	42.5 gal	1 Roll
Lightweight				
02422358	MAT204	15" x 20" Pad	22 gal	200 Pads/Bag

Absorbent Sock

PIG® Original

- Tough and economical
- Your best choice for everyday leak protection to keep floors safe
- Formable socks hug corners and surround machine bases to absorb machine leaks, contain puddles and help keep workers safe
- Contained corncob filler pulls liquids from the floor for maximum absorbency while making cleanup quick and easy
- Polypropylene skin resists tearing, reduces dust, and holds in liquid, even when saturated
- Priced per box
- Manufacturer: New Pig



WARNING: Cancer and Reproductive Harm
www.P65Warnings.ca.gov

Mi Item #	Mfr Part #	Size (Dia x L)	Absorbency	Pkg Qty
02357349	404	3" x 42"	20 gal/Box	40

NOBODY
OUTPERFORMS
PIG



Scan to view more about PIG Mat



New Pig



Some products may ship direct from the manufacturer.

Call. 800-526-9328 Click. MotionIndustries.com Visit. Over 550 Locations



REPAIR AND SERVICE HERE

ALABAMA

Birmingham, 205/251-3231
Brewton, 251/867-6363
Decatur, 256/355-0492
Demopolis, 334/287-0611
Dothan, 334/794-2747
Fairfield, 205/744-1949
Gadsden, 256/543-3441
Huntsville, 256/858-5020
Mobile, 251/661-7800
Monroeville, 251/773-4814
Montgomery, 334/262-5786
Muscle Shoals, 256/383-0862
Pennington, 205/654-2975
Tuscaloosa, 205/759-4261
Hydraulic Supply Company
Mobile, 251/415-5468

ALASKA

Anchorage, 907/563-5565
Fairbanks, 907/452-4488

ARIZONA

Flagstaff, 928/526-3296
Phoenix, 602/269-2331
Tucson, 520/882-6800
Yuma, 928/782-3919
General Tool & Supply
Morenci, 928/865-6294
Tempe, 480/829-3835
Tucson, 520/624-6656

ARKANSAS

Blytheville, 870/763-6880
Ft. Smith, 479/646-6868
Jonesboro, 870/974-7100
Little Rock, 501/568-3116
Pine Bluff, 870/534-1177
Russellville, 479/968-3422
Springdale, 479/556-6905
Stuttgart, 870/672-4785
Texarkana, 870/774-2547
Missouri Power Transmission
Blytheville, 870/762-1131
Conway, 501/450-9333
Fort Smith, 479/783-5300
Hot Springs, 501/262-1133
Springdale, 479/571-2844

CALIFORNIA

Anaheim, 714/780-1791
Anaheim, 657/208-5650
Apple Valley, 760/810-4350
Bakersfield, 661/324-6741
Chico, 530/961-9950
Concord, 925/689-9880
Fontana, 909/357-9898
Fresno, 559/237-9131
Gardena, 310/327-5070
Gilroy, 408/848-3099
Hayward, 510/266-0200
Lodi, 209/334-2530
Los Angeles, 323/728-0281
Modesto, 209/529-0261
Oxnard, 805/487-4877
Palmdale, 661/948-8436
Sacramento, 916/455-1990
Salinas, 831/758-3345
San Diego, 858/565-0092
San Fernando, 818/365-0300
Santa Clara, 408/727-6408
Stockton, 209/943-8155
Turlock, 209/549-8155
Ukiah, 707/462-9766
Victorville, 760/561-7270
Visalia, 559/651-0111
Moss Rubber
Benicia, 707/746-1600
San Francisco, 650/871-7010
Power Industries
Napa, 707/252-7333
Santa Rosa, 707/545-7904

COLORADO

Denver, 303/399-1500
Ft. Morgan, 970/867-1045
Greeley, 970/336-6481
Pueblo, 719/546-0500

CONNECTICUT

E. Windsor, 860/292-6091
Wallingford, 203/294-5427

DELAWARE

Delmar, 302/462-3130

FLORIDA

Bartow, 863/533-0574

Clewiston, 863/983-5500
Ft. Pierce, 772/464-5537
Jacksonville, 904/775-5080
Miami Export, 305/592-7626
Miami/Miramar, 954/704-8565
Orlando, 407/298-0380
Panama City, 850/769-2492
Pensacola, 850/433-0021
Tampa, 813/626-1191
Hydraulic Supply Company
Belle Glade, 561/996-4431
Fort Lauderdale, 954/463-6460
Fort Myers, 239/274-9229
Florida City, 305/248-3713
Jacksonville, 904/783-4401
Lakeland, 863/665-3589
Medley, 305/429-1877
Miami, 305/888-2415
Naples, 239/435-1642
Orlando, 407/295-4537
Pompano Beach, 954/973-5900
Rivera Beach, 561/863-6258
Tampa, 813/621-0790
Miller Industrial Solutions
Cocoa, 321/632-4091
Daytona Beach, 386/255-4509
Ft. Lauderdale, 954/491-6222
Ft. Myers, 239/936-6264
Ft. Pierce, 772/464-0490
Jacksonville, 904/737-9919
Lake City, 386/755-4330
Lakeland, 863/701-9500
Miami, 305/593-1724
Ocala, 352/732-4141
Orlando, 407/849-6000
Perry, 850/584-2161
Tampa, 813/247-7455
West Palm Beach, 561/863-5111
Braas
Oldsmar, 952/937-8902

GEORGIA

Albany, 229/888-0910
Atlanta, 770/948-5300
Augusta, 706/724-7401
Brunswick, 912/265-0178
Cartersville, 770/387-0131
Columbus, 706/324-0313
Dalton, 706/272-3900
Gainesville, 770/532-4268
LaGrange, 706/883-7995
Macon, 478/784-0500
Norcross, 770/441-9909
Savannah, 912/236-1591
Valdosta, 229/244-4548
Hydraulic Supply Company
Augusta, 706/790-0628
Columbus, 706/322-0707
Forest Park, 404/608-0995
Marietta, 678/290-9227
Pooler, 912/965-6771
IDAHO
Caldwell, 208/377-4334
Pocatello, 208/233-3894
Twin Falls, 208/944-3890
General Tool & Supply
Boise, 503/226-3411
Lewiston, 208/798-3239

ILLINOIS

Addison, 630/627-4605
Bloomington, 309/827-0436
Bourbonnais, 815/939-4466
Champaign, 217/352-8550
Chicago S., 312/850-3700
Chicago Hts., 708/574-6300
Countryside, 708/354-5900
Danville, 217/442-8800
Decatur, 217/877-3400
East Peoria, 309/694-6214
Elgin, 847/697-3100
Elk Grove Vill., 847/616-4001
Lasalle, 815/223-7800
Machesney Pk., 815/654-1154
Matteson, 217/235-7151
Montgomery, 630/897-8652
Mt. Vernon, 618/241-9500
Quincy, 217/222-6168
Rockdale, 815/725-6720
Rockford, 815/874-9461
Springfield, 217/523-8337
Waukegan, 847/623-8770
W. Chicago, 630/231-4453
Wheeling, 847/459-7727

INDIANA

Columbus, 812/379-2329
Crawfordsville, 765/362-7227
Elkhart, 574/293-4343
Evansville, 812/423-7701
Ft. Wayne, 260/422-6451
Gary, 219/938-9200
Hammond N., 219/931-3010
Indianapolis, 317/248-2100
Kendallville, 260/347-4135
Kokomo, 765/453-2550
Lafayette, 765/448-8600
LaPorte, 219/362-8526
Muncie, 765/288-4474
Richmond, 765/966-3528
South Bend, 574/291-0770
Terre Haute, 812/232-8344
Warsaw, 574/268-0181
IOWA
Ankeny, 515/965-1065
Cedar Rapids, 319/362-9940
Davenport, 563/391-8888
Dubuque, 563/556-3022
Ft. Dodge, 515/573-5753
Ft. Madison, 319/372-6611
Muscatine, 563/263-3452
Ottumwa, 641/682-5401
Sioux City, 712/258-0595
Twin Falls, 208/944-3990
Waterloo, 319/235-7167
KANSAS
Dodge City, 620/227-6080
Salina, 785/826-9970
Topeka, 785/233-6500
Wichita, 316/942-6700
Hub Supply
Wichita, 316/265-9608
KENTUCKY
Bowling Green, 270/842-6195
Carrollton, 502/732-8114
Lexington, 859/873-7212
London, 606/878-6312
Louisville, 502/964-4804
Owensboro, 270/926-0330
Paducah, 270/443-6291
LOUISIANA
Alexandria, 318/445-7446
Baton Rouge, 225/356-6131
De Ridder, 337/348-5100
Gonzales, 225/644-6568
Harahan, 504/733-5400
Harahan, 985/871-8000
Houma-Cenac, 985/873-9881
Ruston, 318/255-6721
Shreveport, 318/687-2110
West Monroe, 318/387-6875
Drago Supply
Geismar, 225/673-6803
Lake Charles, 337/882-0392
Hydraulic Supply Company
Harvey, 504/362-5901
Voorhies Supply
Harvey, 504/304-2271
Houma, 985/868-4554
Lafayette, 337/235-7545
New Iberia, 337/364-2431
MAINE
Bangor, 207/942-5571
Hinkley, 207/942-5571
Portland, 207/828-4727
Portland, 207/228-1863
Presque Isle, 207/764-7270
Rumford, 207/364-7933
Union, 207/785-4666
MARYLAND
Baltimore, 410/687-2700
MASSACHUSETTS
Beverly, 781/376-5850
Boston, 781/376-5850
Marlborough, 508/229-2688
MICHIGAN
Escanaba, 906/786-8110
Grand Rapids, 616/791-9770
Jackson, 517/788-6700
Kalamazoo, 269/381-1540
Kingsford, 906/774-1100
Lansing, 517/322-0540
MINNESOTA
Duluth, 218/628-2825
Eden Prairie, 952/828-0800
Mankato, 507/345-7856
Marshall, 507/532-0198
Mountain Iron, 218/749-8663
St. Paul, 651/631-2430
Waite Park, 320/656-1111
Braas
Eden Prairie, 952/937-8902
MISSISSIPPI
Columbus, 662/328-8041
Grenada, 662/226-6800
Jackson, 601/373-3383
Laurel, 601/649-1321
McComb, 601/684-3666
Meridian, 601/482-0433
Tupelo, 662/844-2119
Lewis Supply
Corinth, 662/287-6107
MISSOURI
Cape Girardeau, 573/519-3210
Columbia, 573/814-0654
Joplin, 417/781-0010
Kansas City, 816/587-8844
Sedalia, 660/826-5661
Springfield, 417/862-5300
St. Louis, 314/770-2600
Missouri Power Transmission
Cape Girardeau, 573/335-5546
Columbia, 573/474-1446
Rolla, 573/364-8009
Springfield, 417/869-4014
St. Louis, 314/421-0919
MONTANA
Billings, 406/252-6641
Missoula, 406/542-6692
Helena, 406/449-6318
NEBRASKA
Columbus, 402/562-7406
Grand Island, 308/381-2279
Lincoln, 402/467-1153
Omaha, 402/344-7323
NEVADA
Las Vegas, 702/651-9490
Reno, 775/355-0555
NEW HAMPSHIRE
Manchester, 603/641-5649
NEW JERSEY
Kenilworth, 908/241-1047
New Brunswick, 732/828-8711
NEW MEXICO
Albuquerque, 505/884-2606
NEW YORK
Albany, 518/438-1771
Buffalo, 716/743-0691
Elmira, 607/734-2158
New York City, 914/235-0029
Plattsburgh, 518/438-1771
Rochester, 585/247-1121
Schenectady-GE, 518/438-1771
Syracuse, 315/452-1775
NORTH CAROLINA
Asheville, 828/684-3180
Charlotte, 704/588-4100
Greensboro, 336/993-2974
Greenville, 252/752-6400
Hickory, 828/324-5548
Kernersville, 336/993-2974
Lumberton, 910/738-4221
Raleigh, 919/779-7400
Rocky Mount, 252/972-3096
Wilmington, 910/343-1311
Braas
Salisbury, 704/639-0207
Hydraulic Supply Company
Charlotte, 704/319-9685
Greensboro, 336/544-8502
NORTH DAKOTA
Bismarck, 701/223-5901
Dickinson, 701/225-9221
 Fargo, 701/234-9015
 Fargo, 701/492-0444
 Grand Forks, 701/772-7177
OHIO
Canton, 330/305-1991
Chillicothe, 740/775-1226
Cincinnati, 513/533-4900
Cleveland, 216/398-2200
Columbus, 614/444-3030
Dayton, 937/236-7711
Defiance, 419/784-4013
Findlay, 419/424-1003
Lancaster, 740/687-0405
Marion, 937/644-1613
Mansville, 937/644-1613
Piqua, 937/778-1905
Sandusky, 419/625-3432
Toledo, 419/726-7422
DST
Cincinnati, 513/489-3588
Dayton, 937/461-4550
Mt. Vernon, 740/392-2100
Paragon Services & Supply
Lima, 419/224-1988
LEAT
Euclid, 216/692-2778
OKLAHOMA
Lawton, 580/248-2211
Muskogee, 918/682-3611
Oklahoma City, 405/943-3316
Tulsa, 918/459-6919
Missouri Power Transmission
Oklahoma City, 405/236-0594
Stillwater, 405/372-6805
OREGON
Albany, 541/926-5831
Eugene, 541/342-5946
Medford, 541/732-1552
Portland, 503/460-0403
Portland, 503/239-5021
Roseburg, 541/784-9003
Salem, 503/585-7411
General Tool & Supply
Portland, 503/226-3411
PENNSYLVANIA
Allentown, 610/366-9034
Altoona, 814/941-8330
Lancaster, 717/393-3901
Monroeville, 412/856-8034
New Castle, 724/654-6411
Philadelphia, 610/616-9000
Pittsburgh, 412/787-1990
Reading, 610/376-7163
Williamsport, 570/322-2439
York, 717/848-1102
PUERTO RICO
Toa Baja, 787/251-1550
RHODE ISLAND
Warwick, 401/736-0515
SOUTH CAROLINA
West Columbia, 803/796-1071
Florence, 843/395-0095
Greenville, 864/288-7503
Hanahan, 843/554-9090
Spartanburg, 864/578-1470
Hydraulic Supply Company
Columbia, 803/567-4098
Greenville, 864/249-7650
LEAT
Greer, 864/877-1313
SOUTH DAKOTA
Sioux Falls, 605/334-5333
Watertown, 605/886-4114
TENNESSEE
Chattanooga, 423/490-0852
Cookeville, 931/528-3797
Portage, 731/423-4941
Kingsport, 423/349-5092
Knoxville, 865/546-1704
Memphis, 901/398-2000
Morristown, 423/587-6156
Nashville, 615/228-4020
Tullahoma, 931/454-0907
Hydraulic Supply Company
Chattanooga, 423/553-8854
Knoxville, 865/321-9120
TEXAS
Abilene, 325/267-9530
Amarillo, 806/372-5300
Austin, 512/989-5888
Brownwood, 325/643-9923
Bryan, 979/822-1656
Corpus Christi, 361/289-1773
Dallas, 214/351-2211
El Paso, 915/779-3335
Freepport, 979/233-6476
Ft. Worth, 817/838-7878
Garland, 972/278-0220
Groves, 409/962-7575
Houston Petroleum Bearing, 713/956-0150
Houston, 713/688-9100
La Porte, 281/867-2200
Laredo, 956/718-2229
Longview, 930/757-2383
Lufkin, 936/634-4428
Odessa, 432/362-7315
Pasadena, 281/542-1660
San Antonio, 210/662-6772
Sherman, 903/892-4646
Temple, 254/773-4224
Tyler, 903/592-0873
Victoria, 361/576-0015
Waco, 254/772-1119
Weslaco, 956/546-5191
Wichita Falls, 940/766-3328
Drago Supply
Houston, 281/471-7026
Port Arthur, 409/983-4911
Hub Supply
Amarillo, 806/467-4784
Ft. Worth, 817/253-4784
UTAH
Logan, 435/753-7310
Ogden, 801/732-1881
Salt Lake City, 801/972-1036
VERMONT
Barre, 802/622-3400
VIRGINIA
Chesapeake, 757/487-0311
Covington, 540/962-7161
Harrisonburg, 540/434-1919
Lynchburg, 434/239-7111
Manassas, 703/393-2314
Richmond, 804/743-8000
Roanoke, 540/654-6411
Winchester, 540/662-4800
WASHINGTON
Bellingham, 360/752-3303
Longview, 360/425-4650
Moses Lake, 509/765-4367
Pasco, 509/547-0721
Seattle, 206/762-3800
Spokane, 509/824-4800
Tacoma, 253/572-7070
Vancouver, 360/750-1464
General Tool & Supply
Mukilteo, 425/249-5660
Seattle, 206/762-1500
Spokane, 509/795-3105
WEST VIRGINIA
Charleston, 304/744-0201
Fairmont, 304/368-6300
Huntington, 304/525-6706
WISCONSIN
Appleton, 920/731-4121
Eau Claire, 715/833-2440
Fond Du Lac, 920/923-7500
Green Bay, 920/983-6604
Janesville, 608/754-4199
La Crosse, 608/785-1200
Madison, 608/221-3328
Marinette, 715/732-1714
Milwaukee K., 414/649-2400
Portage, 608/742-5129
Racine, 262/554-0110
Sheboygan, 920/208-5600
Waukesha, 262/896-3880
Wausau, 715/848-2994
Braas
New Berlin, 262/780-1600
WYOMING
Gillette, 307/682-8821
Mills, 307/266-2966
Rock Springs, 307/212-3300
MOTION CANADA
ALBERTA
Brooks, 403/501-3888
Calgary, 403/236-5581
Drayton Valley, 780/542-4814
Edmonton North, 780/483-7775
Edmonton South, 780/465-0821
Fort McMurray, 780/743-5504
Fort Saskatchewan, 780/992-6940
Grande Prairie, 780/539-5900
Lethbridge, 403/327-1571
Lloydminster, 780/875-2399
Nisku, 780/955-7494
Red Deer, 403/343-6733
BRITISH COLUMBIA
Abbotsford, 604/556-0716
Burnaby, 604/637-2880
Coquitlam, 604/927-5800
Cranbrook, 250/426-8060
Fort St. John, 250/877-0656
Houston, 250/845-3308
Kamloops, 250/372-9518
Kelowna, 250/632-7107
Nanaimo, 250/753-6411
Prince George, 250/563-0452
Quesnel, 250/992-7935
Vancouver, 604/521-3207
MANITOBA
Brandon, 204/725-1419
Winnipeg, 204/694-0050
NEW BRUNSWICK
Hartland, 506/375-4441
Moncton, 506/859-4345
NOVA SCOTIA
Dartmouth, 902/468-3231
New Glasgow, 902/755-3540
ONTARIO
Belleville, 613/966-1923
Brookville, 613/342-8894
Guelph, 519/763-0710
London, 519/681-5800
Mississauga, 905/695-7878
North Bay, 705/476-3109
Ottawa, 613/723-6200
Sarnia, 519/332-4500
Scarborough, 416/493-4983
Waterloo, 519/884-1220
QUEBEC
Montreal, 514/459-3301
Quebec City, 418/657-3000
Rimouski, 418/725-3750
Saguenay, 418/686-1221
Sept-Îles, 418/962-3232
Sherbrooke, 418/693-5732
St-Hubert, 450/445-0633
St-Hyacinthe, 450/774-3050
Trois-Rivières, 819/374-2788
SASKATCHEWAN
Hudson Bay, 306/865-2245
Regina, 306/721-7233
Saskatoon, 306/931-7771
MOTION MEXICO
For All Mexico Branches
From Mexico,
81-8321-5100
From U.S.,
011-52-81-8321-5100
CA Sallito
CH Chihuahua
DF Mexico City
GT Silao
JL Guadalajara
NA Monterrey
QE Queretaro
SLP San Luis Potosi

BEARINGS - MRO QUARTERLY



DODGE - BALDOR Smart Sensor for Mounted Bearings ABB Ability™

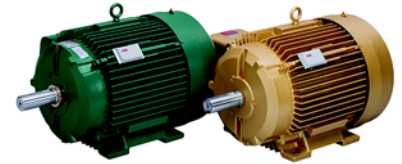
- Easy-to-use, wireless sensor monitors the health of Dodge mounted bearings, allowing users to reduce downtime, improve reliability and operate safely
- Gives warnings on decreasing health status, which allows you to plan maintenance before there is a problem and the system is down
- Complimentary access to the ABB Ability digital platform
- Designed for quick and easy installation and activation
- Sensor is battery-operated, no wiring, special tools or special software required
- Dodge mounted bearings come ready with drilled, threaded and plugged installation holes
- Installed by removing the plug and threading the sensor into the provided receptacle
- Activated by pressing the LED activation switch
- Top enclosure material: Thermoplastic
- Bottom enclosure material: Stainless steel
- IP class: IP66
- Includes: Multipurpose wrench (Mi Item #08073286), 1/8"-27 pipe thread adapter (Mi Item #08073287), 1/4"-28 straight thread adapter (Mi Item #08204832), rubber cap (Mi Item #08253023), bluetooth gateway (Mi Item #08205698)
- Manufacturer: Dodge (ABB)



BALDOR Smart Sensor for Motors ABB Ability™

- Converts traditional motors into smart, wirelessly connected devices
- Attached to the frame of low voltage motors, no wiring or machining is needed
- Relays information about the motor's operation and health via Bluetooth-gateway or smart phone to a secure server
- Picks up data on vibration, temperature and other parameters
- Data can be used to gain meaningful information on the condition and performance of the motor, enabling users to identify inefficiencies within their system and to reduce risks related to operation and maintenance
- Extends equipment lifetime. cuts maintenance costs and reduces or prevents unplanned downtime due to breakdowns
- Data is securely stored in the cloud
- Model #EM5001A04SP is a kit that accommodates all frame sizes
- Manufacturer: Baldor-Reliance (ABB)

BALDOR • RELIANCE



Mi Item #	Mfr Part #	Frame Size Accommodation
07731130	EM5001A01SP	56 to 180
07731131	EM5001A02SP	210 to 286
07731132	EM5001A03SP	365 to 449
07731133	EM5001A04SP	Universal Kit
Smart Sensor Gateway		
08083322	EM5001GW	N/A

Mi Item #	Mfr Part #	Connection Type
07957415	750000	Tapered Thread

HireATechWriter.com

